

SOCIETY
**INTERIORS[®]
&
DESIGN**

www.societyinteriorsdesign.com

**Architect Hafeez Contractor
The Master Urbanist**

Anjali Azadd Dubey, Ranjeet Sharma & Amar Kirale, Ramesh Lohar & Bindi Shah, Neha Kathuria Sinha, Nilesh Shyam Bhate (DSP Workspace), Swathy Sivaraman, Hardesh and Monica Chawla, FOAID Designs Vipuja and Krushnakant Parmar, Vindhya Rao, Pradeep Kodikara and Jineshi Samaraweera, Anil Badan and Sanjana Singh.

Champions are not born, they are built.

An age-old saying that holds true for all but has a special synergy with real estate - the backbone of the Indian economy.

Where we see development, we understand developers. You are at the centre of India's growth story - from affordable housing to luxury living from residential ecosystems to commercial hubs. Every unit embodies a dream you are fulfilling.

You are building the nation from within and that's what makes you the Champions. You have the purpose of building India, we have the purpose of building you.

Empowering
550+ Champions in 8+ countries

knestTM
ALUMINIUM FORMWORK
World's best engineered aluminium formwork

#BuildWithKnest



SCAN TO KNOW MORE



Handwritten signature

MADE FOR AN INTELLIGENT LIFESTYLE



The G-Vue Smart Touch Panel makes convenience a way of life by bringing complete home control to your fingertips. It makes controlling lights, fans, blinds, HVACs, & appliances effortless and also helps schedule scenes as per personal preferences. Not only does it take care of managing power and security but also helps create the perfect ambiance and set the mood right to complement your aesthetics.



Shutter-curtain
Blind Control



RGB Control



Password
Unlock



ON-OFF
Control



Dimming
Control



Air Quality
Indication



AC Control



Multi-scene
Control



RANGE OF SOLUTIONS ▶ uPVC | Aluminium | Doors | Façades

Science@work



Prevents Dust Buildup



Noise Insulation



Keeps out Rain*



Thermal Insulation

*T&C Apply. Servicing 900+ Cities

Call: 1800 102 9880 (Toll Free) | 74286 91568 | response@fenesta.com | www.fenesta.com

Keep the Outside Outside Forever

The multi-chambered profiles and fusion welded joints improve overall sealing and insulate windows to keep chilly winds out of your home, keeping the inside warm and comfortable.

Fenesta 
Better by Design

India's No.1 Windows & Doors Brand



COLOUR PALETTE



SOCIETY
**INTERIORS
&
DESIGN**

www.societyinteriorsdesign.com

Publisher: Magnate Publishing Private Limited

Consulting Editor: Swati Balgi

Contributer: Priya Prabhu

Graphic Designer: Syed Zaid Inamdar

Business Heads

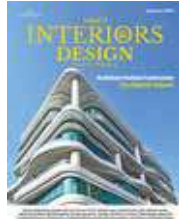
National, West Zone: Sunil Khavnekar +91 9820303096 Preeta Nair +91 9892746767

North Zone: Ravi Roushon +91 9818198689

South Zone: Rekha Kambhoj +91 9845587253

East Zone: Ashim Banik +91 9830056642

Gujarat: Madan Menon +91 9898002522



Contents

Cover Story

Padma Bhushan awardee Ar. Hafeez Contractor, has designed trendsetting buildings that have shaped global architecture and urban landscapes. **10**

Workstation

DSP Workspace's workstation exemplifies invention, functionality and class, elevating the standards for corporate workspaces.

First Look

Designed by NS & Associates, Kohinoor Kaleido, is a state-of-the-art experience center in East Pune.

Lifestyle

FOAID Designs & Collaborations designed a residence named 11 House, a true masterpiece of spacious luxury and thoughtful design.

Designed by Ar. Anjali Azaad Dubey of Pratham Design Ventures, the Kalpvraksha residence is an architectural marvel that seamlessly blends modern and traditional design elements.

Designed by Storeyboard Design, "The Gilded Nest" is a harmonious fusion of luxury and functionality.

Designed by UA Lab, Bellevue—A House in the Park in Ahmedabad seamlessly blends architecture with the surrounding green expanse.

Designed by Vindhya Rao Design Studio Inc, this all-white home in California radiates an understated elegance.

Information

Sabarmati Highspeed Rail Terminal, redefines the standards of safety, design, and sustainability with ALUCOBOND® PLUS

Store Profile

ZAURA Boutique in Ahmedabad by R+R Architects, is a fine blend of nature-inspired elements and minimalism in a retail space.

Restaurant Design

Virat Kohli's restaurant One8 Commune designed by SAAZ Design combines urban refinement with a lively Bohemian vibe.

IDEAS reimagines an 18th-century palace restaurant in Jaipur, blending timeless heritage with contemporary elegance.

Designerscape

Essentia Environments' office in Gurugram perfectly exemplifies their design ethos.

Hotel Design

The Taj Hotel & Convention Centre, Agra, seamlessly combines modern luxury with Agra's rich cultural heritage.

Décor Tips

Browse through these coffee tables that are sure to transform your spaces.

Getaway

The Kumaon, a boutique eco-tourism resort in Uttarakhand, offers unparalleled views of the Himalayas.

Events

ABID Interiors 2025, East India's prestigious interior design and architecture exhibition, set the stage for ground-breaking innovation and creativity

Product Design

Update on the latest products, fabrics and furniture in the market.

Society Interiors & Design is published once every month by Magnate Publishing Private Limited, 501, La-creme CHS Ltd, Kondivita VLG, MIDC, Andheri(e), Near Akruiti Trade Center, Mumbai, Maharashtra, India, 400059. Tel No: +91-993-0061-674. Editorial texts and illustrations are the copyright of the publishers of this magazine. No one may reproduce any material before permission is obtained in writing.

All disputes are subject to the exclusive jurisdiction of competent courts and forums in Mumbai (India) only.

2022 Copyright Magnate Publishing Private Limited.

Please address all your advertising, subscriptions and trade enquiries for to: Magnate Publishing Private Limited, 501, La-creme CHS Ltd, Kondivita VLG, MIDC, Andheri(e), Near Akruiti Trade Center, Mumbai, Maharashtra, India, 400059. Tel No: +91-993-0061-674. Email: info@magnatepublishing.in

MAGNATE PUBLISHING IS NOT RESPONSIBLE FOR ANY CLAIM MADE BY THE ADVERTISER

THE GEEVEES

2025

Godrej

We are excited to announce our
Esteemed Jury of The GeeVees 2025



Ar. Suchitra Joshi
Godwin Austen Johnson



Ar. Sonali Baghwati
DPA



Ar. Ratan Batliboi
Ratan J Bathliboi Consultants



Ar. Debasish Guha
Arcop Associates



Ar. Vaishali Mangalvedhekar
SJK Architects



Ar. Tuhsar Sogani
TSDPL



Ar. Karl Wadia
Architect Hafeez Contractor



Ar. Dr. Ponni M. Concessao
Oscar & Ponni Architects



Ar. Dr. Oscar G. Concessao
Oscar & Ponni Architects



Ar. Rahul Tyagi
RT & Associates



Ar. Abhigyan Neogi
Chromed Design Studio



ID. Sarabjit Singh
Fab Studio



Ar. Abin Chaudhuri
Abin Design Studio



ID. Rashmi Tiwari
Tathaastu Interiors



Ar. Vineeta Singhania Sharma
Confluence

REGISTER NOW

Scan to
know more



Insight

Our association with renowned architect Hafeez Contractor spans many years—one marked by mutual respect, admiration, and shared ambition. It is with great pleasure that we feature his exceptional work once again after a significant gap, witnessing firsthand the evolution of his designs, which have consistently set new benchmarks in the world of architecture.

From the very beginning, Hafeez Contractor's designs have stood as pillars of innovation and creativity, integrating modern elements with functional aesthetics. His work, ranging from residential to commercial spaces, has helped shape the skyline of cities, blending form and function in ways that continue to inspire both seasoned architects and young talents. In this edition, we delve deeper into his journey, exploring his creative process, philosophy, and the signature style that has earned him a revered place in the world of architecture.

Over the years, we have strived to showcase the best of the best in the world of architecture and interior design. We are proud to feature some of the most renowned architects and design firms, celebrating their visionary work that continues to redefine spaces. As we continue to explore the ever-evolving world of design, we remain committed to bringing you the latest trends, thought leadership, and cutting-edge innovations. This edition is dedicated not only to Hafeez Contractor's enduring legacy but also to the architects, designers, and firms that are defining the future of design.

We hope you find inspiration in the pages that follow.

Regards,

Ashok Dhamankar





VARDHAMAN
BUSINESS BAY



A SAHIL MEHTA VENTURE
VARDHAMAN GROUP
THE COMPASS TO YOUR DREAM HOME

Premium Offices &
High End Showrooms

grow 
with
Convenience



CALL FOR MORE DETAILS:
+91 9331 108 108 / 022-3597 5756



VISIT OUR WEBSITE :
info@vici.co | www.vici.co



Add : Vallabh Baug Lane, Ghatkopar East, Mumbai - 400077

MAHARERA : P51800055109 | maharera.mahaonline.gov.in

Editor's Note

Hafeez Contractor is an architect whose design philosophy has truly inspired countless professionals. He has this incredible ability to blend modern design with cultural relevance, creating spaces that feel both innovative and grounded. What I admire most is his forward-thinking approach, seamlessly integrating new technologies while maintaining a deep connection to the environment around him. His designs always leave an impact, both visually and practically. In this issue, in our cover story, we highlight a few projects from his vast portfolio that exemplify the intersection of creativity, functionality, and luxury.

We also showcase the stunning 11 House by FOAID Designs & Collaborations, where spacious luxury meets thoughtful design, creating a perfect home for those who value both style and practicality. The Kalpvraksha Residence, conceived by Ar. Anjali Azaad Dubey, blends modernity with traditional craftsmanship, while The Gilded Nest by Storeyboard Design redefines the concept of home with a seamless fusion of luxury and function.

Other highlights include Bellevue by UA Lab, which integrates architecture with nature; Vindhya Rao's minimalist white home in California; and DSP Workspace's innovative approach to corporate office design. In retail and hospitality, projects like ZAURA Boutique by R+R Architects and One8 Commune by SAAZ Design create unique experiences, with Marble Arch by IDEAS reimagining an 18th-century palace as a contemporary restaurant in Jaipur.

Additionally, Kohinoor Kaleido by NS & Associates offers a cutting-edge experience center in East Pune, while Essentia Environments' office in Gurugram exemplifies their design philosophy. The Taj Hotel & Convention Centre in Agra seamlessly blends modern luxury with the city's rich heritage. For those seeking stylish décor, we present a selection of coffee tables that can elevate any room, and for the perfect getaway, The Kumaon resort in Uttarakhand offers an eco-tourism retreat with breathtaking views of the Himalayas. These projects showcase the limitless possibilities of architecture and design, inspiring us to rethink the spaces we inhabit and how they shape our lives.

Regards,

- Swati Balgi



— —

 — —
JVM'S
MONICA
GARDENS
 — —
 MONUMENT TO LUXURY

A COMPLETE ADDRESS
 FOR COMPLETE HAPPINESS



Located in the heart of Mulund-East
 Modern 3 Podium + 17 Floors Tower
 3 BHKs vastu compliant homes



- PREMIUM 3 BHK DECK RESIDENCES
- 3.2 METER FLOOR TO FLOOR HEIGHT
- INTRODUCING CAPSULE LIFT
- EXCLUSIVE TERRACE GARDEN
- CONVENIENT SHOPPING COMPLEX
- LAVISHLY DESIGNED LOBBY
- WELL EQUIPPED MODERN GYM
- 1.20 METER WIDE DECK

Project by



JVM SPACES
 a mehta group venture

 **97572 46997**

Site Address: JVM's Monica Gardens, Vidyalaya Road, Near Raje Sambhaji Maharaj Ground, Opp. Dr. Yashwantrao Dode World School, Mulund (E), Mumbai - 400081

Corporate Office: 1104, 11th Floor, Dev Corpora, Cadbury Junction, Eastern Express Highway, Thane-West. T: +91- 022 - 2543 4440 / 1 / 2 | E: info@jvmspaces.com | W: www.jvmspaces.com



RERA REGISTRATION NO
P51800052364
Available at website <http://reraonline.maharashtra.gov.in>

Note: all plans, drawings, facilities etc are subject to the approval of respective authorities and would be changed if necessary. The discretion remains with the developer, all rendering, floor plans, pictures, maps are the artist's conception and not actual depictions of building, its wall, roadways or landscaping. The developer does not warrant or any legal liability or responsibility for the accuracy, completeness, or usefulness of any information disclosed.

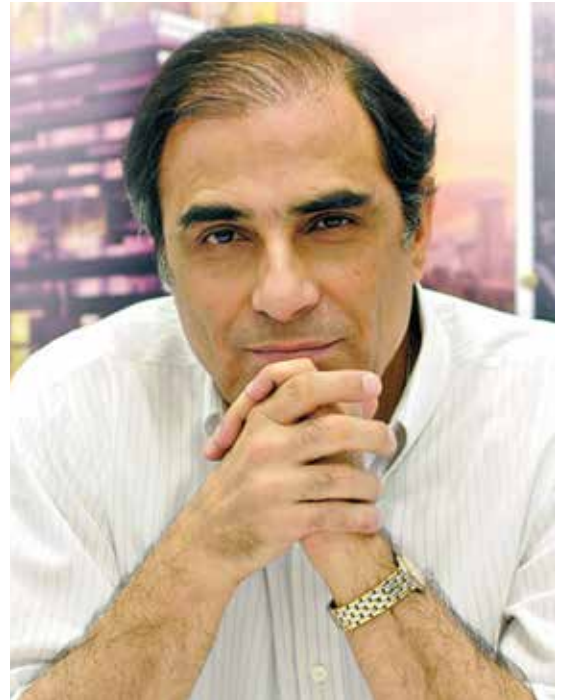
Iconic Architectural Designs

Padma Bhushan awardee Ar. Hafeez Contractor, one of India's most renowned architects, has designed trendsetting buildings that have shaped global architecture and urban landscapes. Discover and draw inspiration from his ground breaking designs.

For aspiring architects in India, Hafeez Contractor is not just a name; he's an icon, a role model, and a dream collaborator. Hafeez Contractor's journey from a young boy with a passion for sketching to becoming one of the most celebrated architects in the world is an admirable journey for future generations. For many, his success story embodies the pinnacle of what dedication, creativity, and vision can achieve in the world of architecture.

Today, his firm is the largest architectural practice in India, boasting a team of over 600 professionals and a vast portfolio of 7.2 billion square feet of ongoing projects across 100 cities and five countries. Hafeez's work is a masterclass in versatility and scale. Whether it's the iconic Imperial Towers in Mumbai, which remains a benchmark for luxury high-rise living, or the 23 Marina in Dubai, one of the tallest residential towers in the world, his designs leave an indelible mark on the skyline. From modernizing India's busiest airports in Mumbai and New Delhi to crafting the world-class DY Patil Stadium in Mumbai, Hafeez's projects consistently redefine what is possible.

But his impact goes far beyond the buildings themselves. Hafeez is a true change-maker who believes that architecture must respond to the needs of society. His passion for social housing has led to transformative initiatives, including Mumbai's Slum Rehabilitation Scheme, which has given countless families access to dignified living conditions. His ambitious Western Waterfront Development proposal envisions a greener, more efficient Mumbai, demonstrating his commitment to sustainable urban growth.



DLF Camellias, Gurugram



For young architects, Hafeez Contractor represents what can be achieved when ambition meets opportunity. His relentless pursuit of excellence and ground breaking ideas have not only won him over 100 national and international awards but have also cemented his position as a beacon of inspiration for future generations.

Despite his towering achievements, Hafeez remains deeply grounded in his philosophy: "Architecture should be honest and must respond to the spirit of the time." It is this clarity of purpose that resonates with budding architects who dream of walking in his footsteps. For many, the opportunity to work with Hafeez Contractor is the ultimate aspiration: to learn from the very best and contribute to projects that shape the nation's identity.

Through his work, Hafeez has shown that architecture is not just a profession; it's a calling. He has set a gold standard for design, innovation, and social impact, ensuring that his legacy is not just about the structures he has built but the inspiration he continues to provide to the architects of tomorrow.

Society Interiors & Design In Conversation with Hafeez Contractor, discussing his vision, the latest techniques he adopts, and his message to young architects

What major trends or movements have influenced your approach to design over the years?

Over the years, my approach to design has been deeply influenced by the growing urgency to address environmental challenges and create sustainable solutions. As architects, we bear a profound responsibility to prioritize the environment in everything we design—it is not just an option; it is the need of the hour.

One of the key principles that guides my work is minimizing environmental impact without compromising on functionality or aesthetics. For instance, when designing the first net-zero building in Jaipur for Manipal University, we focused on achieving sustainability at every stage. This involved meticulously planning construction processes to minimize concrete usage—a single cubic meter of concrete saved can make a significant difference in reducing carbon emissions.

While aesthetics remain an essential element of design, functional efficiency takes precedence. Every design decision must reflect a balance between beauty, purpose, and resource conservation. Whether it's preserving trees on a construction site or optimizing land use, my priority is to create spaces that are not only efficient today but also sustainable for future generations.

Ultimately, our role as architects goes beyond creating structures—we are shaping the legacy we leave behind on this planet. By focusing on material savings, land conservation, and environmental stewardship, we can ensure that the earth we pass on to future generations is one they can thrive in.



Rustomjee Crown, Mumbai

How has technology impacted the way you approach design today compared to earlier years?

Technology has revolutionized the way I approach design today compared to earlier years. While traditional methods have their charm and merit, relying solely on old technologies is no longer feasible. To stay relevant and create impactful designs, it is crucial to embrace and integrate the latest advancements.

Today, cutting-edge technology enables precision, efficiency, and innovation in every aspect of design and construction.

Have advancements in construction techniques influenced your architectural choices?

Advancements in construction techniques have significantly influenced my architectural approach. Technologies like prefabrication, high-strength materials, and Building Information Modeling (BIM) have expanded design possibilities, enabling us to create innovative forms, optimize urban spaces, and enhance efficiency. These innovations challenge us to push boundaries, rethink functionality, and design for a better future.

How do you address the challenges of designing for cities with limited land and growing populations?

Land is the most precious resource we have, yet it is the one thing that cannot be manufactured or expanded. With the global population growing rapidly, the challenge lies in accommodating more people within limited space. This calls for a shift towards efficient, compact, and vertically oriented urban development.

High-rise cities are no longer just an option—they are an urgent necessity. By building upward rather than outward, we can optimize land use and create space for essential infrastructure while preserving open areas for greenery, parks, and forests. These natural spaces are vital for maintaining ecological balance, improving air quality, and enhancing the quality of life in urban areas.

Embracing this approach requires thoughtful urban planning and architectural innovation to ensure that vertical cities are not only functional but also sustainable and livable. From energy-efficient building designs to integrated green spaces within skyscrapers, the goal should be to harmonize urban development with environmental conservation. The future lies in building high and leaving the ground for nature to thrive.



Nahar Amrit Shakti, Mumbai



Which of your projects do you consider a turning point in your architectural philosophy?

Every project is a turning point—a unique opportunity to innovate, challenge norms, and create meaningful impact. Each new project brings with it distinct challenges, fresh perspectives, and the chance to redefine what is possible in design and functionality.

Are there specific projects where balancing cultural heritage and modern innovation was particularly challenging?

Balancing cultural heritage with modern innovation is always a rewarding challenge. It involves preserving architectural legacies while meeting contemporary needs. Such projects create a dialogue between history and progress, crafting spaces that celebrate identity and inspire future generations. It's about respecting heritage while embracing innovation to shape a meaningful future.

What new trends or challenges do you foresee in the next decade of architectural design?

The global population is continuously growing, and India is no exception. With more people, the demand for land, food, and water will rise significantly. The challenge lies in meeting these needs without depleting our farmland or cutting down forests.

What would your advice be for young architects?

My advice to young architects is simple yet crucial: Think deeply about the environment and the future before you design or build anything. Architecture has a profound impact on the world around us, and every decision you make contributes to shaping the environment for generations to come. Prioritize sustainability, respect the natural ecosystem, and design with a long-term vision in mind. Remember, your role is not just to create structures but to craft spaces that improve lives, preserve resources, and inspire progress.

Society Interiors & Design highlights a selection of standout projects from Hafeez Contractor's extensive portfolio, showcasing his innovative approach to architecture and design.

DLF CAMELLIAS

DLF Camellias, an iconic development in Gurugram, is a masterpiece of modern luxury living designed by Hafeez Contractor, along with Rajeev Trehan and a team comprising specialist consultants CBM (Structure), Meinhardt/ThinkBim (MEP), SWA (Landscape), and Rockwell (Interiors and Club). DLF Camellias received the International Architecture Award 2022 in the multi-housing category.

The project is a harmonious blend of contemporary but stately and timeless architecture and natural landscapes, offering a sanctuary of opulence and tranquillity in the heart of the bustling city. Nestled amidst the lush greenery of the DLF Golf & Country Club and bordered by the expansive Aravali forests, the Camellias provides residents with breathtaking views and an unparalleled connection to nature.

The unique site location required extensive study of massing and layout and the final result of sixteen towers, ranging from eighteen to thirty-eight stories- while creating a striking silhouette against the horizon -also do full justice to the way that the apartments have been laid out and how each one enjoys the views.

In the detailing, a notable design feature is the motif inspired by the Camellia flower, and its thoughtful use that binds the different elements of design including façade treatments and flooring patterns, adding both aesthetic appeal and functional benefits such as screening and filtered lighting.

At the ground level too, the landscape design also draws inspiration from this motif seamlessly blending nature and architecture. The Camellias stands out for its commitment to exclusivity, privacy, and sustainability. Each residence is thoughtfully designed with outdoor living spaces in the form of large decks and open layouts that maximize natural light and ventilation, complemented by cutting-edge smart home technology and energy-efficient solutions. The seamless integration of nature and architecture reflects Hafeez Contractor's vision of creating a serene and luxurious living environment.

A pedestrian arcade at the ground level, fringing the landscaped gardens, seamlessly integrates all the towers and amenities. Residents enjoy a wealth of world-class amenities, including a private clubhouse, swimming pools, tennis courts, spa facilities, and concierge services. Every aspect of The Camellias has been meticulously curated to ensure an exceptional lifestyle, combining timeless elegance with modern comfort and convenience.



***You look glamorous
for a reason...***

TIS[®]
THE
INSIDE
STORY
DECORATIVE LAMINATES



**MRJ TRADING PVT LTD.F/201, Shyamkamal C Bldg, Wing 1
Agarwal Market, Vile Parle East.Mumbai - 400057, India.**

Contact : +91 98200 68118 | app.tislaminates.in

LODHA AMARA

Lodha Amara is a prime example of how modern architecture seamlessly integrates with nature while offering functional, sustainable living spaces. Set on an 80-acre site surrounded by lush greenery on Kolshet Road, Thane, the development reflects a vision centered on creating a community that meets the needs of contemporary homeowners while promoting a healthy and balanced lifestyle. The project is headed by design team Karl Wadia and Nishant Gupta, structural consultants- Gokani Consultants, Mep - Burohappold Engineering and Sitetectonix Pvt. Ltd. As landscape consultants.

The design approach emphasizes open spaces, natural light, and ventilation, ensuring that every home feels spacious and connected to its surroundings. Expansive glass facades maximize daylight while offering sweeping views of the verdant greenery. The clean, modern lines of the buildings are thoughtfully complemented by the strategic placement of landscaping elements and green roofs, allowing the development to feel like an oasis within the city.

Divided into three phases, the project has been meticulously planned to ensure that the design reflects both functionality and aesthetic appeal. Each phase has been carefully crafted with wide, open layouts in every apartment, maximizing space and providing residents with the flexibility to personalize their homes. The apartments come in varied configurations, ranging from 1 BHK to 3 BHK, with a strong focus on circulation and space optimization to enhance the living experience.

The landscape design, developed by Sitetectonix Private Limited, aligns seamlessly with the vision of creating a green and tranquil environment. Pathways, open gardens, water features, and recreational spaces are thoughtfully interspersed throughout the development, allowing residents to enjoy the serenity of nature alongside modern conveniences. Communal spaces include separate clubhouses for different zones, an indoor pool, a poolside café, a private theatre, and multi-purpose party halls, all designed to foster a strong sense of community.

Recreational and spiritual spaces further enrich the project, with facilities such as badminton courts, a cricket patch, a gymnasium, and dedicated temples, including a Ganesha Temple and a Jain Temple, catering to the diverse needs of residents.

Located with excellent connectivity to major business hubs, educational institutions, and healthcare centers, Lodha Amara is a perfect blend of modern living, environmental responsibility, and lifestyle amenities. This development stands as a testament to thoughtful design and planning, offering residents an unparalleled urban sanctuary that prioritizes both well-being and convenience.



Nahar's Amrit Shakti

Nahar's Amrit Shakti, designed by renowned architect Hafeez Contractor, is a meticulously planned township in Chandivali, Mumbai. Executed by design team encompassing Hiten Negandhi and Nisar Shaikh, the township project features over 40 towers offering world-class amenities supported by class apart infrastructure like Nahar Medical and Diagnostic Center, Nahar International School affiliated to Cambridge Board, Nahar Business Center, Super Market, Shopping Avenue, Jain Temple, and more. It is a self-sustaining urban community that seamlessly integrates residential, commercial, and recreational spaces to cater to the dynamic needs of modern families. Spread across a sprawling landscape, the township reflects a harmonious balance of innovative architecture, green open spaces, and lifestyle-centric amenities.

The master plan adopts a hierarchical zoning approach, with designated areas for high-rise residential towers, commercial establishments, and lush open spaces. Strategically placed roads and pathways ensure seamless connectivity, prioritizing pedestrian movement while minimizing vehicular interference in residential zones. The residential towers, characterized by their clean vertical lines and contemporary façades, are designed to maximize natural light and ventilation while ensuring privacy. Large windows and balconies offer panoramic views of landscaped gardens and the surrounding cityscape, while the use of modern materials such as glass and concrete enhances the towers' sleek aesthetic. Inside, spacious layouts with open-plan designs cater to diverse family needs, combining functionality with luxury through high-quality finishes and fixtures.

"Green and open spaces are central to the township's design, creating an urban oasis amidst Mumbai's bustling environment. Landscaped gardens, tree-lined walkways, and serene water features promote wellness and relaxation, while community spaces like playgrounds, yoga decks, and sports courts cater to residents of all ages. Pocket parks and gazebos further enhance the sense of community and social interaction. The township also integrates essential infrastructure, including retail outlets, educational institutions, and healthcare facilities, making it a self-contained ecosystem. Its strategic location ensures excellent connectivity to key areas like Powai, Andheri, and Mumbai's International Airport," explains Hafeez Contractor.

Sustainability and smart living are at the core of the township's planning. Eco-friendly features, such as rainwater harvesting, solar panels, and waste management systems, underline its commitment to environmental responsibility. Additionally, a suite of lifestyle amenities, including clubhouses, resort-style swimming pools, and cultural spaces like amphitheatres, school, hospital enhances the quality of life.

Nahar's Amrit Shakti exemplifies Hafeez Contractor's vision of creating an integrated urban township that combines luxury, sustainability, and convenience. Its thoughtful design and meticulous town planning make it a benchmark for modern urban developments in Mumbai, offering a holistic living experience for residents.



GYANODAYA 2.0, NAVI MUMBAI

Gyanodaya West Campus is an innovative training facility designed to mark a new chapter for the Aditya Birla Group in shaping the next generation of talent. Located in a contemporary six-story mixed-use building, the campus is thoughtfully designed to serve the needs of young, enthusiastic professionals joining the Group, reflecting their dynamic and aspirational qualities through its architectural form. The project is headed by his design team, Karl Wadia, Kalpesh Mevada and Ali Hyder. The key consultants for this projects were Electro-Mech Consultants for MEP and PS Landscape Design & Ecology for landscape.

Spanning 43,000 square feet, the campus is divided into specific zones to cater to the varied needs of its users. The lower levels house classrooms and conference facilities, creating an optimal learning environment for the new recruits. On the fourth level, a large cafeteria and dining space serve as a hub for interaction, fostering a sense of community among visitors and staff. The top two floors are dedicated to guest rooms and recreational facilities, offering comfort and relaxation for the occupants.

A striking design feature of the building is the double-height volume of the drop-off areas, which sets the tone for the welcoming atmosphere within. Upon entering the campus, visitors are greeted by a grand staircase that invites exploration of the space, while also providing thoughtful pause points for informal interactions. The design encourages movement and interaction, both physically and intellectually, reflecting the aspirations of the Aditya Birla Group's young talent.



The campus' architectural language is a balance of modernity and sophistication, with a curvilinear glass façade serving as one of its key elements. This façade embodies the fresh ideas and forward-thinking mentality of young minds, seamlessly integrating into the overall design. The breakout spaces, in the form of semi-open decks, provide dynamic and playful areas that bring the building's form to life. These spaces encourage social interaction and relaxation, offering flexibility in how they are used.

Natural light plays a vital role in the design, with strategically placed skylights welcoming daylight into the interior, enhancing the comfort and well-being of the building's users. The light-filled spaces foster an open and positive atmosphere, encouraging creativity and collaboration. The podium decks also double as recreational spaces, offering additional areas for leisure and engagement within the building's footprint.

The interior design follows a minimalist aesthetic, dominated by the use of white, which not only enhances the spacious feel of the interiors but also pays homage to the branding of the Birla Group. This cohesive design approach connects the exterior to the interior seamlessly, with fluid transitions that create a harmonious flow throughout the building.

The landscape design, conceived by PS Landscape Design & Ecology, introduces an element of tranquility, helping to blur the lines between indoor and outdoor environments. Thoughtfully integrated green spaces enhance the overall experience, bringing nature into the building and contributing to the soothing atmosphere of the campus.

BITS Pilani Institute of Management & Law

The BITS Pilani Institute of Management & Law in Kalyan, Mumbai, is an ambitious 60-acre campus designed to accommodate a new generation of students and faculty with a focus on adaptability, functionality, and student interaction. This project is headed by design team Karl Wadia, Apoorva Sharma, Kalpesh Mevada, and design team Renoy Philip, with key consultants JW Consultants LLP for structural work, Pankaj Dharkar & Associates for MEP, and PS Landscape Design & Ecology for landscaping. Set to be completed in 2025, this campus will cater to 5,000 students, offering a dynamic space for both management and law studies.

The architectural design is centered around the traditional concept of the Gurukul, a model known for fostering close-knit communities and collaborative learning environments. The campus is masterfully organized into three distinct zones: Academic, Student Housing, and Faculty Housing. These zones are strategically laid out to foster maximum interaction and communication between the faculty and students. The Academic Zone is designed with three large blocks, all inward-looking towards a central plaza, forming a hub for academic activity. This central plaza becomes the heart of the campus, providing spaces for shaded seating, lawns, and interactive areas where students and faculty can engage in informal learning and social exchanges. The vibrant facades of the academic buildings serve as the perfect backdrop to these spaces, adding a dynamic and colorful atmosphere to the campus.

The Housing Zones for both students and faculty are designed with a more fluid and flexible approach, encouraging ease of interaction beyond the formal academic environment. These zones are interconnected by the large sports fields that act as a catalyst for community building, providing an expansive space for recreational activities and fostering a sense of togetherness among students and faculty. This thoughtful planning ensures that the campus is not just a place for academic growth but also for holistic development and well-being.



A major feature of the campus is the Sports Centre, which has an accessible roof that connects the Centre of Excellence (COE) building in the Academic Zone via a foot-over bridge. This design not only encourages physical activity but also enhances connectivity between key areas of the campus. The COE Building itself is elevated on stilts, providing a visual connection between the central plaza and the sports field on either side, further promoting a sense of openness and accessibility.

Additionally, the campus includes a Dining Block with a capacity of 2,000, ensuring that students and staff have easy access to nourishment throughout the day. The inclusion of adequate parking facilities and all necessary infrastructure ensures the smooth operation of the campus, accommodating both the daily activities and large events that the campus is likely to host.

The landscape design by PS Landscape Design & Ecology adds another layer of beauty and functionality to the campus. The integration of green spaces, walking paths, and outdoor recreational areas creates a serene environment for students and faculty to relax and recharge. The entire design aims to blend traditional architectural concepts with modern needs, offering a space where academic excellence, community interaction, and well-being coexist harmoniously.



RUSTOMJEE CROWN, MUMBAI

Rustomjee Crown, located in Mumbai, is a striking development that redefines luxury living with its towering presence and state-of-the-art design. This landmark project is headed by design team Karl Wadia / Chaitalee Patadia, Vikas Jonwal, Landscape Collaboration Co., Pankaj Dharkar Associates / Mahimtura Consultants Pvt. Ltd. It consists of two 68-storey towers and one 67-storey tower, spread across a 5.75-acre plot. The development is a true embodiment of advanced engineering, contemporary design, and expert craftsmanship, combining innovation with architectural excellence.

Rustomjee Crown features over 60 world-class amenities, making it a comprehensive offering for modern living. Each home within the development is meticulously designed to maximize space and comfort while incorporating cutting-edge technology and design elements. Hafeez Contractor's expertise ensures that every aspect of the project, from its structure to the interiors, is crafted to meet the highest standards of quality and functionality.



This remarkable project stands as a testament to engineering precision and architectural excellence, seamlessly integrating modern living with luxurious amenities. Hafeez Contractor's commitment to excellence is evident in every project he undertakes, setting a benchmark for the next generation. In conclusion, we are confident that the younger generation of architects will draw inspiration from his projects and continue to push the boundaries of architectural design.

Photos: Noshir Gobhai

Text: Swati Balgi



A Novel
Perspective
on Ceramics



COLLECTION



creavit[®]

Your bathroom, reimagined for the future.

Sustainable Future
This Way

100% recyclable Savior
washbasin developed
under the Creavit Green Initiative.



✉ radaragencies@gmail.com

☎ 8527908124 / 8169733709 / 9821530747

Dealership enquiry solicited all over India.



VISION 2035: PIONEERING GROWTH WITH TECHNO PAINTS

Since its establishment in 2001 by Mr. Srinivasa Reddy Akuri, Techno Paints has emerged as a trusted name in India's construction sector, earning recognition for its commitment to excellence. Leading this legacy is Techno Paints, the flagship company known for its unmatched quality, customer-centric approach, and innovative services. Spanning Andhra Pradesh, Telangana, and beyond, Techno Paints has completed over 1,000+ projects and offers an extensive palette of more than 3,000 shades, delivering precise colors and prompt services through state-of-the-art color banks.

As we approach our much-anticipated IPO in 2024-25, Techno Paints is not just focusing on immediate milestones but also charting a bold vision for 2035. This vision embodies a decade of transformative growth, expanding our product portfolio from Emulsions, primers, enamels and putties to include wood adhesives, tile primers, wood polishes, and waterproofing solutions. Under the insightful leadership of Mr. Reddy, who emphasizes innovation, quality, and community well-being, Techno Paints is in its mission to generate value for employees, investors, customers, and communities alike.

Achieving Excellence at Scale

Techno Paints takes immense pride in its capacity to execute large-scale projects with precision. Supported by a robust team of over 3,000 skilled technicians. We hold the distinction of being India's pioneer turnkey painting solution provider, capable of painting an impressive 20 lakh square feet daily. With our dedicated fleet and in-house painting teams, Techno Paints leads the industry in operational efficiency and large-scale integration.

Our recent innovations include 50 new texture finishes, catering to diverse budgets and preferences, from economical solutions to luxurious finishes. These advancements, driven by partnerships with international leaders such as a renowned Italian paint company, reflect our ability to deliver global standards to Indian consumers.

Nurturing Innovation and Entrepreneurship

At the heart of Techno Paints' growth strategy is the cultivation of entrepreneurship. Over the years, we've empowered 25 entrepreneurs within our network, and by 2035, we aim to expand this number to 250 business partners while growing our workforce tenfold. This entrepreneurial focus is complemented by a robust R&D division that anticipates changing market dynamics and develops products aligned with India's evolving aesthetics and functional requirements.

Our exclusive experience centers, planned both domestically and internationally, will showcase our cutting-edge innovations and provide customers with immersive, hands-on experiences. Through these centers, we aim to strengthen our brand presence and foster deeper connections with our diverse clientele.

Building a Sustainable Future

Techno Paints is committed to sustainability and environmental stewardship. Our green product line, developed using natural minerals, extends product durability while promoting ecological balance. This commitment aligns with our larger mission of creating sustainable solutions that resonate with environmentally conscious consumers.

With a growing network of channel partners, corporate collaborations, and retail touchpoints, we are well-positioned to expand our footprint in the Indian paint market. Superstar Mahesh Babu, our brand ambassador, encapsulates the youthful and aspirational ethos that defines Techno Paints, helping us forge a strong bond with our customer base.

A Global Vision

Our Project Execution Model ensures seamless scalability across geographies, laying the groundwork for global expansion. As young consumers increasingly embrace painting as a creative and engaging family activity, Techno Paints is well-equipped to cater to this cultural shift. Through an integrated approach encompassing manufacturing, project execution, R&D, and community-driven growth, Techno Paints is building a brand poised for enduring success. As we gear up for our IPO, we reaffirm our commitment to excellence, innovation, and sustainability. Together, we are painting a brighter future—one milestone at a time—toward 2035 and beyond.





INDIA'S only
COMPANY

**WE
SUPPLY
WE
APPLY**

EMULSIONS | PRIMERS | PUTTIES | ENAMELS | FLOOR PAINTS | TEXTURES | METAL FINISHES | WOOD FINISHES



“Manufacturing
to
Application”

Delivers complete solutions.



A Creative Nexus

DSP Workspace's workstation in Mumbai exemplifies invention, functionality and class, elevating the standards for corporate workspaces.



Most office interiors often tend to be mundane spaces; with the focus mainly revolving only around functionality, while aesthetics is secondary. However, the design of DSP Workspace's office, features a visually-appealing design, that merges the beauty of nature and the calmness of minimalism with striking contrasts. A workspace fit for an urban design company: That's perhaps the first impression a visitor would draw from DSP Workspace office in Airoli, Navi Mumbai. This approximately 24000 sq. ft. office strikes a perfect balance between corporate minimalism and a nonchalant industrial aesthetic that prioritises the authenticity of expression. This modern office, situated in the heart of a bustling city, is a testament to the power of unconventional design to create inspiring and functional workspaces.





DSP Workspace is your trusted partner in designing and delivering exceptional commercial interiors. With a focus on managed office fitouts and co-working spaces, they provide turnkey solutions that are meticulously planned and expertly executed. Sharing the company's mission, Nilesh Bhate, CEO, DSP Workspace says, "Our mission is to create spaces that not only meet the demands of modern businesses but also inspire those who work within them. Every project we undertake is driven by a commitment to quality, innovation, and a deep understanding of our clients' needs. At DSP Workspace, our client's success is our priority. We are incredibly proud to announce a significant milestone achieved by our exceptional team. We have successfully delivered the commercial fitouts which includes managed services for Spocto (Navi Mumbai) and Work Villa (Chennai) with a total value of Rs 320 million, across area of 24000 sq. ft., all within a remarkable span of just 26 days. This achievement not only highlights our unwavering commitment to meeting tight deadlines but also showcases the dedication and expertise of every individual involved. Despite the challenging timelines set by our clients, our team remained focused, ensuring that quality, precision, and customer satisfaction were never compromised."





The design strategy at DSP Workspace not only creates a sense of openness and fluidity but also fosters collaboration and communication among team members. Design philosophy is a subtle flow of vibrant colours and efficient designs. The absence of sharp corners and straight lines promotes a relaxed and creative atmosphere, encouraging innovative thinking and teamwork. The space features a reception area, an open workspace, MD's cabin, conference room and training room, all following a refined design language through their thoughtful alignment.

The workstation follows the theme modern sophistication through minimalism. The choice of colour and materiality was also crucial in supporting the overarching concept of the design. Giving more details about the same, Nilesch says, "Our workstation's specifications called for a multipurpose and functional approach. To balance the various elements, we have opted for a vibrant colour palette with shades of orange, blue, yellow, green and whites bringing life to the design."



This thoughtfully curated color palette serves as the overarching visual theme. The space exudes a fuss free, clean and aesthetic atmosphere, thus facilitating a seamless interaction with clients.

The project's unique selling point lies in the carefully crafted collaborative spaces, each possessing an individual look and feel while maintaining an overall sense of privacy throughout the office. The office environment was designed to inspire and invigorate, creating a sense of freshness and timelessness that entices individuals to return. The design creates an overall narrative of the workplace of understated elegance, where clean, flowing forms and an egalitarian layout foster an inviting and efficient environment.

An Oasis Reimagined

Designed by NS & Associates, Kohinoor Kaleido, is an experience center in Pune where classic charm and new age elegance meet in harmony

The client wanted a luxurious, high-end look but within a stringent time constraint – a challenge that transcended into an opportunity. A thoughtfully curated material palette, refined yet simple finishes, and punctuating spaces with an artistic envelope helped Pune-based firm NS & Associates, achieve the same. Located in the East Pune, Kohinoor Kaleido is an experience center that spreads across an expansive as 17,000 sq. ft. The brief stipulated by the client outlined the designing of a lounge that could provide an unforgettable experience to the customers, through a welcoming reception, waiting area, audiovisual room, engagement zones, admin office and show or sample apartments.

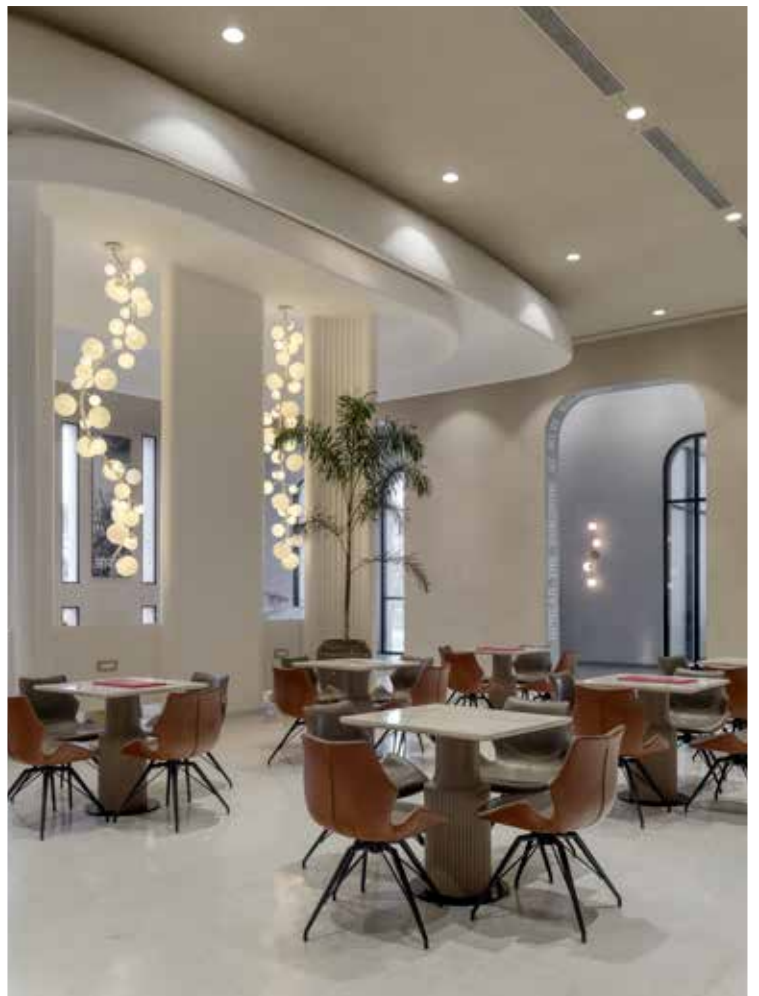
For the past 15 years, Neha Kathuria Sinha, Principal Designer & Founder of Neha Sinha & Associates (NSA), has believed that meaningful design begins with the 'who.' It's not just about function; it's about crafting spaces that echo the client's life, joy, and story, shaping every room with purpose and soul. With over 30+ clients, and having completed 150+ projects, NS and Associates is one of the most prominent Interior & Landscape Firms in India. Seamlessly blending aesthetics with functional spaces that reflect the client's vision, Neha Sinha and her team, ensure that designs are tailored with meticulous attention to detail, ensuring they stand the test of time.



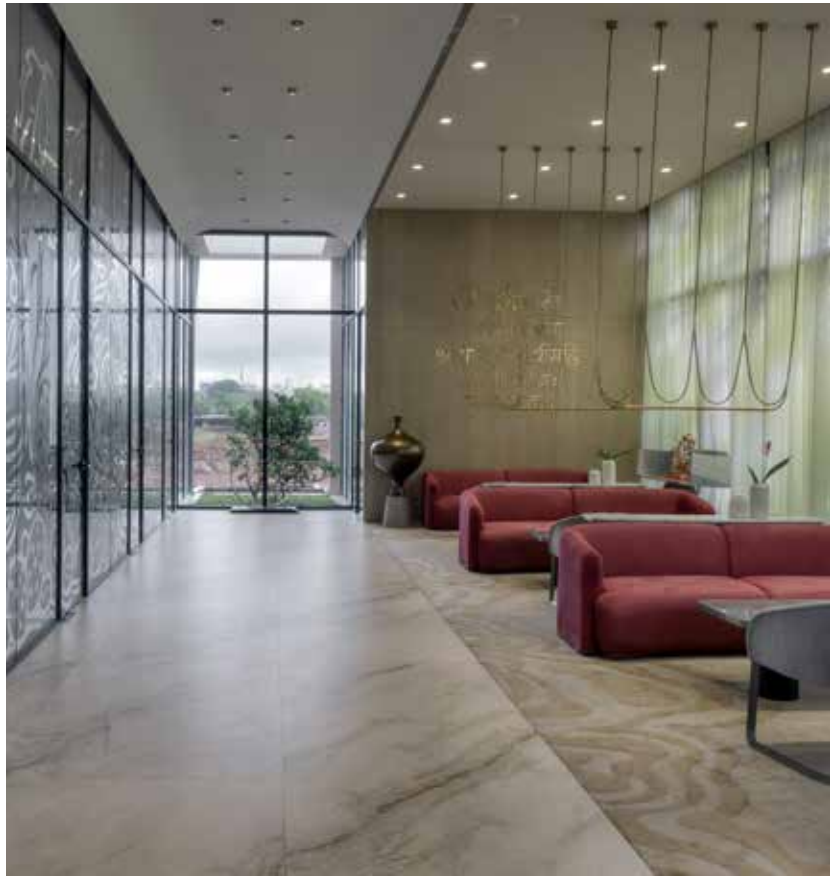


Designed as an immersive experience centre, each element reflects on brand identity & project vision – enhancing recall value for the customers. Legacy walls, project highlights, and integrated brand initiatives bring the story to life, creating a cohesive narrative that reinforces the brand story. Vivid components have been integrated via materiality, texture, colour, shape, and scale to create a harmonious design experience. Sharing more insights on the design of the experience center, Neha says, “This experience centre celebrates form, function, and storytelling. It seamlessly extends the essence of the outdoors inside. Its monolithic structure, with earthy, curved walls and a striking white canopy, makes a bold yet serene statement. Slit windows allow soft natural light to filter in while shielding the space from harsh southern heat, creating a cool and inviting ambiance.”

With expertise in experience centres, this East Pune project blends spatial flow and functionality, offering a memorable experience for customers. The generous volume of the space allows accommodation of high footfall, ensuring fluid movement and comfort. Fully furnished and meticulously curated, the show flat exudes luxury and elegance. “The design concept is derived from the given location. The idea was to create an ‘Oasis’, which is reimagined with a luxurious touch”, informs Neha.







Inside, a tunnel-like entry sets the tone with its sense of wonder, connecting the spaces through stunning arched openings. The entrance porch is adorned with a custom pink sandstone surface, complemented by terrazzo chip flooring in the archway and reception area. The experience centre is distinguished by a 45-foot custom carpet, tailored in a single seamless roll for a flawless, high-end look. At the reception, earthy tones meet luxury with a brushed brass back panel, custom lights & Venetian flooring with a sculptural marble table. The waiting area continues the welcoming theme, featuring a tree-inspired ceiling and partition that provide a calming vibe. Hand-painted details, including the project's master plan and the five elements of life, add a touch of storytelling while you settle in. The sales area has a layered stencil of plain and textured waves, which is continued on the customized carpet of the open sales area. The colour of the sofa; rust, is one of the brand colours - making it instantly recognizable. Both spaces feature lighting designed to align perfectly with their individual needs. The audiovisual room is an experience all on its own, with waved ceilings and cementitious wall textures thoughtfully designed to create an immersive soundscape.

Neha further adds, "Indirect lighting, a monochromatic palette, and plush carpeted flooring elevate the ambiance. Every detail is designed to make the visit effortless, inspiring, and unforgettable. A dynamic rhythm of decorative wall lights transforms the arched walkway into a captivating pathway of luxury. In the waiting lounge, the bench gives you a feeling of sitting beneath a tree, where grapevine-inspired lighting symbolizes its hanging fruits, creating an elegant connection between nature and design."

This modern design of Kohinoor Kaleido, is a testament to the power of unconventional design to create inspiring and functional spaces.



A Symphony of Luxury, Light and Personalized Design

FOAID Designs & Collaborations designed a residence named 11 House, which is a masterpiece of spacious luxury and thoughtful design.





Designed by FOAID Designs & Collaborations, led by Ekta Agarwal and her team of Parul Agarwal VK, Thanveer Moosa, and Manimaran, the 11 House in Saligramam, Chennai, epitomizes spacious luxury and thoughtful design. Spanning an impressive 10,000 sq. ft., this residence is not just a house but a dream come true for its owner. With a vision years in the making, the homeowner entrusted the team with complete creative freedom, resulting in a harmonious blend of natural light, ventilation, and comfortable luxury.

Minimal setbacks and carefully designed light wells on all sides ensure that natural light floods the interiors. Large windows and expansive balconies on the North and West sides enhance ventilation and create a seamless connection with the outdoors. The ground floor features an open-plan layout with a spacious kitchen at its heart.





“Adding a unique touch, a small studio apartment was designed for the matriarch of the family. This innovative space includes an open kitchen, a living room, and a private entry for her guests, offering her both independence and proximity to her loved ones. Adjacent to the formal living room is a double-height courtyard, affectionately called the “chai point,” which is used for serene morning and evening tea sessions. At its center, a thoughtfully curated fountain serves as a striking focal point, visible from the main entry.” Explains Ekta Agarwal.

The first floor reflects the family’s collective vision, with each room tailored to individual preferences. The cosy common living area, with west light filtering through a jaali wall, provides a private sanctuary for the family of five.

The master suite is a sanctuary of elegance, featuring a double room with a walk-in wardrobe separated by a custom gold-framed sliding partition with fluted glass. The en-suite bathroom, clad in exquisite marble, is a masterpiece of craftsmanship. Its curved corners, grooved marble details, and indirect lighting enhance the luxurious ambiance, creating a space free of cuts and edges.

The elder daughter’s room exudes a rustic charm, inspired by her love of nature. Green accents, floral artwork, and a balcony filled with plants create an oasis of calm. A unique dresser partition offers a private space for her growing needs.









In contrast, the younger daughter's room is modern and curvilinear, mirroring her sharp and vibrant personality. Each piece of furniture was custom-designed, including a feature study table that doubles as a partition between the wardrobe and sleeping area. Natural light from a large balcony-facing window reduces the need for artificial lighting, while the bed panel optimizes this illumination.

Connecting these personalized spaces is a central corridor that serves as a gallery. With intricate marble inlay flooring and artistic cabinetry, it creates a visual link between the living room, foyer, and master bedroom, embodying the essence of an art exhibition.

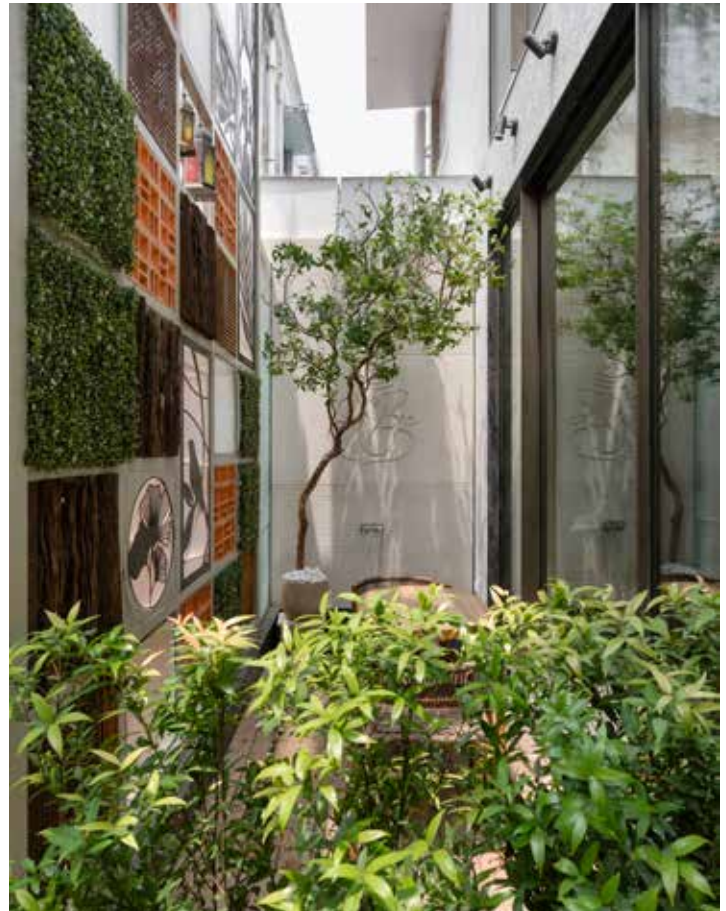
The second-floor houses the son's room, designed with subtlety to allow future renovations. A state-of-the-art home theater, featuring motorized plush leather seating and SPC flooring in a unique pattern, offers a cinematic experience rivaling a mini PVR. A teak wood Chinese tea table at the center adds a touch of sophistication, making it a favoured spot for intimate gatherings. The room opens onto a large balcony, ideal for entertaining friends and family.

The terrace is a haven for outdoor living, featuring a covered, automated cabana and a private barbecue area. Customized cane furniture and artifacts sourced directly from China enhance the space. The terrace has become a favorite spot for the family, especially during Chennai's frequent rains.

One of the most remarkable aspects of the 11 House is the seamless integration of in-built furniture, crafted in the client's own furniture factory. This collaboration between the design team and the client's resources brought the vision to life with unparalleled precision and creativity. From the intricate details to the grand gestures, every element of the house reflects the synergy of design and craftsmanship.

Overall, this home is more than just a residence; it's a testament to thoughtful design and collaborative effort. With its personalized spaces, luxurious details, and innovative concepts, it's a dream realized for its owners and a shining example of contemporary architecture in Chennai.

Photographer: Phosart Studio



Project Details:

Concrete Texture Paints: Studio Concrete/ Decodrama & Super surfaces

Flooring: Gunatapalli, Granite and quartz from Guntapalli

Aluminium Sliding Doors and Partition: Gold & black coated -

Teak Wood Doors and Frames: Innovative Interiors

Teak Wood Staircase and Railing: Innovative Interiors

Modular Furniture: Innovative Interiors

Lights & Switches: Phillips & Norisys

Italian Bathroom Fixtures and Accessories: Catalono & FIMA bathroom fixtures

Glass Panels and Railings: Saint Gobain

Air Conditioners: Mitsubishi

Custom Artworks: FOAID Designs

Sliding Partitions & Wardrobes: Innovative Interiors

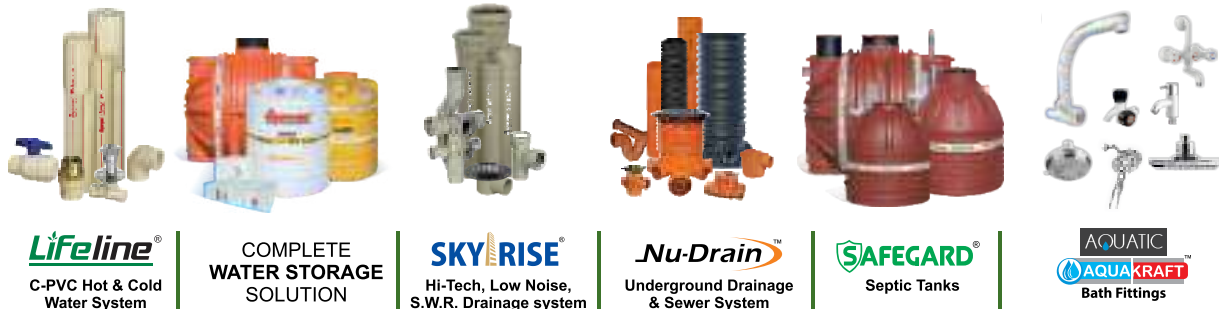
SMARTER PLUMBING & DRAINAGE SOLUTIONS FOR FUTURE READY SMART CITIES!

Since 1942
Supreme[®]
People who know plastics best
TOTAL PIPING SOLUTION



www.supreme.co.in

Jeevan bhar ka saath... 



Lifeline[®]
C-PVC Hot & Cold
Water System

COMPLETE
WATER STORAGE
SOLUTION

SKY RISE[®]
Hi-Tech, Low Noise,
S.W.R. Drainage system

Nu-Drain[™]
Underground Drainage
& Sewer System

SAFEGARD[®]
Septic Tanks

AQUATIC
AQUAKRAFT[™]
Bath Fittings

40+ Product categories across

• Plumbing • Drainage • Sewerage • Water Management

Explore Supreme's exhaustive product range of more than 13,750 eco sensible green products & find a perfect match for your smart homes!

Salient Features : Widest range | Stronger and resilient | Excellent resistance to corrosion and chemical attacks | Perfect hydraulic properties | Simple and leak proof joints | Quick and convenient installation | Durable | Maintenance free | Eco-friendly | Most cost effective.

Toll Free No. 1800-102-4707 | 91-22-4043 0000 | care@supreme.co.in

Download the App
Supreme Pipes

Lifestyle

“कल्पवृक्ष”

“Anjali, I think we make a home which is just like us duo, modern in appearance but with traditional soul.”- said Ketaki to her architect cum friend Ar. Anjali and she happily agreed-“Done! Ketaki, brilliant idea. Together, they created “**Kalpvrkssha**” a house that embodied traditions and innovations too. With natural ventilation, handcrafted elements, and spaces aligned with vastu, it stood as a wish-fulfilling tree of comfort and harmony. **Kalpvrkssha** became more than a home-it was a timeless testament to their shared vision.

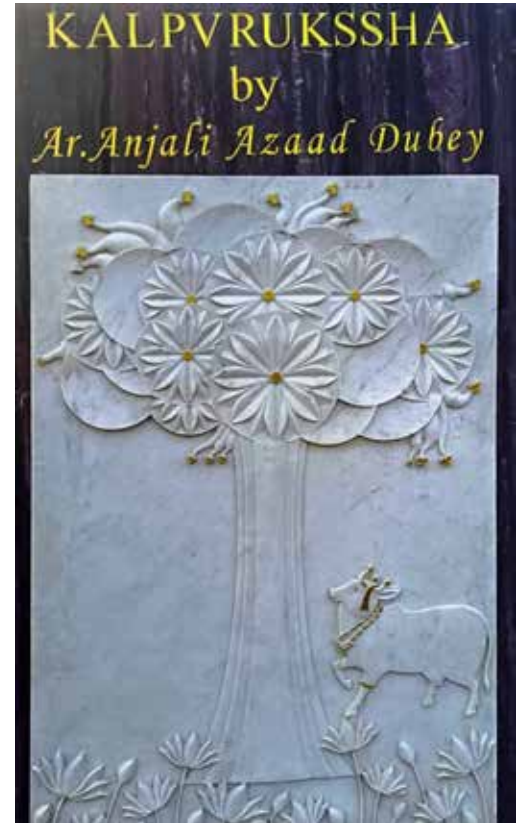


Ar. Anjali Azadd Dubey
Founder of
Pratham Design Ventures,
Udaipur





Mr. Sumit and Mrs. Ketaki Mundra , a tech-savvy duo and alumni of IIT Mumbai, also hold master’s degrees from University of New Hampshire, USA. With their strong technical background, they had a clear vision of their dream home that seamlessly incorporated naturopathy in construction, climatology and passive cooling techniques all while adhering to Vastu Shastra. Ar Anjali enthusiastically took on the challenge, promising to bring their vision to life.



Surprise Inscription (2'-6" X 6'-0") for Anjali



Filler slab having green slab just above it, Chettinad Pillars & Louvered parapet to provide fresh air and day light to the green slab above and to dining kitchen



High plinth seen from the entrance



Northern openings (Courtyard, Windows, Verandha's & Corridors)



Northern Plunge pool providing cool daylight all through the year emphasizing Vastu aspects as well **Kalpvrksha** sculpture becomes an important part of the DATUM

In **Kalpvrksha**, the design beautifully blends tradition and modernity. The **high plinth** safeguards the structure and elevates its stature, while the **eastern balcony** invites morning sunlight, and the **northern verandah** ensures a flow of cool breezes. To enhance thermal comfort, **southern earth fill** and **green slabs** provide natural cooling and insulation, making the house energy efficient year-round. Traditional elements like **Athangudi tiles** and intricately crafted **Chettinad pillars** add warmth and timeless charm, creating a space that feels both innovative and rooted in heritage.



Southern Earth fill deck for Landscape & Passive cooling



Athangudi Organic Flooring



Northern Veranda inspired by "**THINNAI**" from chettinad houses has Athangudi organic flooring, Blue shaded wooden openings & Plunge pool by the side in the courtyard



Chettinad Door way with Tamil Nadu Architecture's favourite element called "**MUGAPPU**"



First floor Library looking at the eastern green terrace filled with plants, overlooking the plunge pool and courtyard, in the left, southern day light and magic of wind tower in the right.



Below ground connected with southern earth fill naturally conditioned home theatre cum Odissi dance practice room



Minimalistic bedroom to avail westerly winds in Rajasthan

The house features cozy, minimalist interiors, with large windows that capture breathtaking views of the Aravalli ranges. Thoughtfully designed, the north-facing library invites a refreshing breeze, creating a serene reading nook, while the downstairs theatre boasts a skylight for natural light and acoustics for a cozy cinematic experience. Locally sourced materials ensure harmony with nature, while strategic openings provide cross ventilation and dynamic light patterns. The design blends indoor-outdoor living seamlessly, offering a tranquil retreat enriched by natural aesthetics and sustainability.

The house design focuses on creating intimate, functional spaces that celebrate simplicity. Every detail reflects a balance between modern living and a deep connection with the environment.



Ar. Anjali Azadd Dubey's Innovative design and material palate used in **KALPVUKSSHA**.

Curated To Perfection

Designed by Storeyboard Design, “The Gilded Nest” in Bengaluru is a harmonious fusion of luxury and functionality, crafted with meticulous attention to detail

It is an art to transform a house into a home. Storeyboard Design was entrusted to work with a family who trusted their design vision completely. “The Gilded Nest” was a labor of love, dedicated to creating a perfect sanctuary for the clients and their little one. Recalling the client’s brief Swathy Sivaraman, CEO & Principal Architect, Storeyboard Design says, “Our client wanted a luxurious yet functional home that maximized spaciousness, especially in the kitchen and living areas. The vision included a cohesive, luxurious style with a soft, muted golden palette to bring warmth and sophistication.”

Located in Bengaluru, the central design theme of this home that spreads across 2300 sq. ft. is modern luxury with a soft, muted golden hue that runs consistently throughout the home. “This choice reflects understated elegance while adding warmth and cohesion. Golden accents appear in everything from the textured walls to the handles on cabinetry and profiles on furniture, providing continuity and sophistication”, adds, Swathy. The theme is evident in the material choices—textured golden walls, soft beige upholstery, and light fixtures with subtle metallic finishes that cast a warm glow. In the living area, the custom deconstructed sofa with integrated side tables features subtle golden accents. The master bedroom continues this luxurious palette with veneered panels and a travertine-inspired bed-back, complemented by a functional glass-shutter wardrobe that enhances the room’s ambiance while maintaining the golden undertone. This seamless colour palette provides continuity across spaces, from the guest room’s sea-green silk-inspired wallpaper to the playful tones in the kids’ room.





The living area has been extended to include the balcony, making the room feel airy and expansive. The kitchen, with its beige and gold palette, has been extended into the utility area to create a spacious, well-equipped environment for baking. The island provides ample counter space, while storage solutions are cleverly tucked away to keep the area organized and visually clean. “We included bench seating in the dining area, which can double as a cozy work-from-home space, reflecting both utility and versatility”, informs Swathy. The master bedroom reflects the luxury theme with golden hues, featuring a travertine-inspired bed-back panel and a rich veneer finish on the walls. A blend of playfulness and subtlety, the kids’ room includes an arched headboard and a pop of colour with a striking blue curtain. Ample storage is built into the design, with rounded corners for safety and functionality. The guest room features soft sea-green hues and a silk-inspired wallpaper, with a wooden fluted bed-back that enhances the cozy, inviting ambiance. Each bathroom carries forward the theme with textured tiles and sophisticated storage solutions. The pooja room is integrated with the LCD unit and features a fluted glass pocket door, allowing it to transition seamlessly between private and open settings as needed.

The main challenge was working around the structural column in the center of the living room. “Rather than allowing it to disrupt the flow, we incorporated it into the design with finishes that minimized its visual impact, allowing the room to feel open and harmonious. Additionally, creating a spacious kitchen with ample storage in a limited layout required careful planning. By extending into the utility area, we achieved a larger kitchen footprint. These strategic design choices allowed us to deliver on the client’s vision of spacious luxury, despite the layout constraints”, concludes Swathy.

A Home in Harmony with Nature

Designed by UA Lab, Bellevue—A House in the Park in Ahmedabad seamlessly integrates formal and informal spaces within a cuboidal glass pavilion, blending architecture with the surrounding green expanse.





UA Lab, a multidisciplinary design studio led by Vipuja and Krushnakant Parmar, designed Bellevue—A House in the Park in Ahmedabad, a distinctive project spread across a gross built area of 9,500 square meters. The project introduces the concept of creating a “third place” in architecture, blending formal and informal spatial expressions to meet the unique needs of the client.

The client sought a versatile space that could host professional meetings during weekdays while transforming into a vibrant setting for socializing with family and children during weekends and festive occasions. This dual-purpose requirement necessitated a seamless integration of formal and informal elements within the design.

The expansive site, characterized by its vast open landscape, inspired the architects to conceptualize a simple cuboidal glass pavilion. This pure and generic form offers flexibility in its usage, aligning with the client’s vision. Strategically positioned at one edge of the site, the pavilion establishes a strong connection with the surrounding open green expanse, allowing the natural environment to become an integral part of the spatial experience.





The cuboidal box is envisioned as a rectangular pavilion that features an innovative design element along its longer edge—a light edge that alternates between pergolas and a flat roof. The pergola introduces a dynamic interplay of light and shadow, creating a lively and ever-changing atmosphere within the linear space. This light edge also serves to seamlessly merge the interior and exterior spaces. Beneath the flat roof, a relaxed seating area outside the pavilion enhances the connection to nature, fostering a serene and tranquil experience.

Adding her insight on the design and material use Vipuja Parmar says, “Exposed Ceiling with natural RCC ceiling. Natural stone is used for flooring. Furniture works are done with wood and veneer. The finishes are selected to give a natural and serene experience to the entire space.”

On the shorter side, the pavilion opens onto a swimming pool area. When the glass sliders are fully opened, the pavilion integrates with both the expansive green vista on one side and the pool on the other, creating a fluid transition between these spaces. In front of the pavilion, a sunken seating area has been designed with a circular layout. This circular form harmonizes with the rectilinear pavilion and the larger green surroundings, offering a balanced spatial arrangement.







The client's preference for ornamental plantation is reflected in the circumferential seating edge, which is adorned with conical Ficus plants. These ornamental layers are thoughtfully placed between the pavilion and the surrounding greenery, creating varied sensory experiences that enhance the connection to nature. The pavilion dissolves into the landscape, allowing nature to take center stage. By emphasizing immersive seating arrangements, the design celebrates the act of slowing down and enjoying the beauty of the natural environment.

A meandering pathway is designed to connect the pavilion to the house. The pathway is designed as an in-between space. The pathway twirls around the existing trees. The project celebrates the activity of seating, relaxing, and socializing. Different pauses are designed to create opportunities to sit, relax, and enjoy the greens outside the house. Multiple smaller and bigger seating plazas are designed along the pathway.



Water features and natural stones are used to give a serene experience to the walkway. A water mural is designed to represent the circle of life. Natural stone flooring is used on the pathways. Natural stones with different finishes are used to create centric patterns in each seating plaza. These patterns define the plaza space along the pathways. Circular Dhangadhara sandstones of varying size are placed loose over the lawn area. It provides an interesting pathway pattern without disturbing the lawns. The contrast between the sandstone and the green lawns gives visual pleasure to these pathways.

Exposed ceiling with natural RCC ceiling. Natural stone is used for flooring. Furniture works are done with wood and veneer. The finishes are selected to give a natural and serene experience to the entire space.

Bellevue – A House in the Park seamlessly blends architecture with nature, offering versatile spaces that balance functionality and serenity. UA Lab's thoughtful design celebrates harmony, adaptability, and the timeless beauty of the natural environment.

Photographs: Maulik Patel / Inclined Studio

White Rhapsody

Crafted by Vindhya Rao Design Studio Inc, this all-white home in San Jose, California conveys spaciousness, lightness and an understated elegance.

Designed by Vindhya Rao, Principal Designer, Vindhya Rao Design Studio Inc, this all-white abode in San Jose, California, is centered around creating a serene and minimalist home that blends contemporary design with a warm, inviting atmosphere. The home that spreads across 1985 sq. ft. was designed for an Indian couple that completely believed in the principles of vastu. The home began as a structure built in 1958—an extremely old house that had suffered years of wear and neglect. While the property retained some structural integrity, the vision demanded a complete transformation. The foundation was the only element preserved, as everything else was torn down and rebuilt from scratch.

Speaking about the client brief and design process, Vindhya says, “The client’s brief was clear yet ambitious—an ultra-modern, contemporary home characterized by a crisp white aesthetic. They wanted the home to feel light, airy, and serene, with the home itself becoming the centerpiece, free from unnecessary distractions. This extended beyond interiors to the exterior, where the same design principles were applied with precision.” One of the key challenges was designing this expansive space to accommodate 4 bedrooms and 3 bathrooms, without compromising on the sense of openness and grandeur. The challenge was making the home feel huge, open, and airy, despite the tight layout requirements. “Through careful planning and design, we were able to create an expansive home that feels as vast and welcoming as the vision intended”, recalls Vindhya.





As soon as you step into the home, the formal living room towards the left, immediately welcomes you with an air of brightness and playfulness, setting the tone for the rest of the house. Understanding the need to create an inviting atmosphere right from the entrance, the team has opted for a vibrant yellow accent in this space to immediately grab attention and evoke a feeling of warmth and positivity. Vindhya explains, "The pop of color complements the natural light streaming through the windows, further enhancing the space's openness and vibrancy. To complement this lively color, we integrated a striking piece of artwork."





The living area towards the right, though compact at just 20 feet by 15 feet, was designed to feel expansive, maximizing the sense of space through thoughtful choices. The first step in this was the decision to use white walls and a white ceiling, allowing ample natural light to flood the room. "In a break from conventional design, we opted for a series of windows and doors throughout the space, rather than a single small door. This choice not only flooded the living area with natural light but also offered panoramic views of the exterior, merging the inside with the outside to create a continuous visual flow", adds Vindhya. The neutral-toned drapes, stretching from floor to ceiling, were carefully chosen to soften the space while drawing the eye upward. Vindhya further informs, "A key design element throughout the living and kitchen areas is the use of Calcutta marble stone cladding for the LCD wall, which also continues across other areas of the living space, most notably in the kitchen backsplash and countertop, unifying the space and creating a continuous flow."

The simple yet functional kitchen plays a vital role in connecting the functional and aesthetic elements of the home. "We wanted to ensure that the dining area was seamlessly integrated into the overall open-plan concept of the living and kitchen spaces. To achieve this, we continued the use of white tones that dominate the surrounding areas, creating a unified and spacious feel", says Vindhya.

*Innovative Designs
Stunning Looks*

India's No. 1[®]
NIRALI
NG

STAINLESS STEEL KITCHEN SINKS



98
models

167
sizes

387
choices

SINKS FOR ALL YOUR NEEDS



Scan QR Code For Nirali NG Catalogue

Mfg & Mkt by: Jyoti India Kitchensink Pvt. Ltd.

Head Office Mumbai : 225, Kaliandas Udyog Bhavan, S.H. Tandel Marg, Near Century Bazar, Worli, Mumbai - 400025

+91 22 2430 5500 | 2437 5511 | 2422 0109 | +91 77109 43445 | Email: sales@NiraliNG.com | info@NiraliNG.com

Delhi Branch Office : S-26, Ground Floor, Okhla Industrial Area, Phase II, New Delhi - 110020. | +91-93500 43092 | salesdelhi@NiraliNG.com

www.NiraliNG.com

Follow us on : [f](#) @NiraliNGkitchensinks | [i](#) Nirali_NG



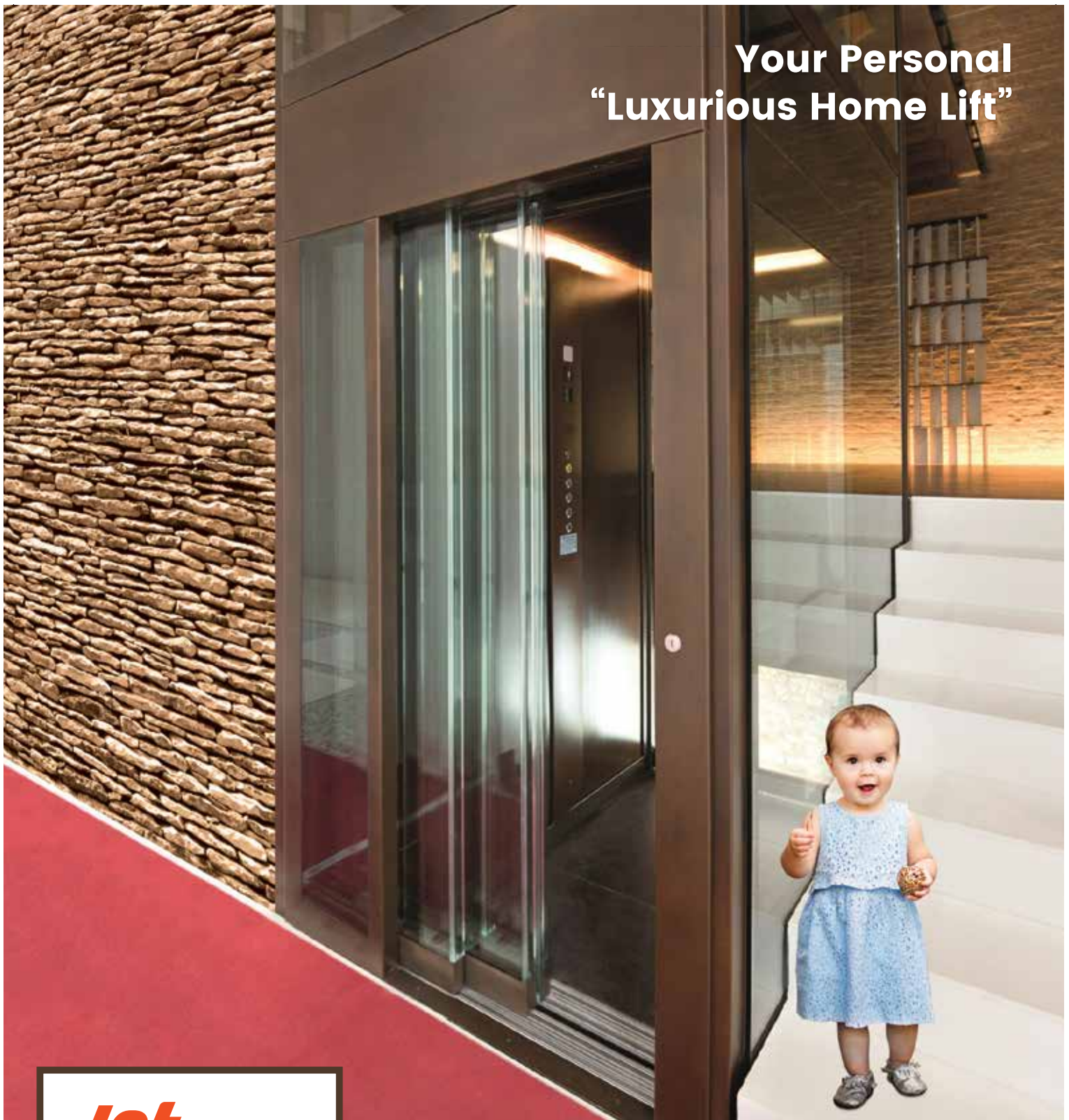
The home features four spacious bedrooms. In the master bedroom, they opted for a low-profile bed, maintaining the room's modern, minimalist aesthetic. The focus in this space was on maximizing natural light, which is why one entire wall of the room is made up of expansive windows. The concept of blending openness with natural light is echoed in the layout, where the careful positioning of windows allows light to flood the room. The other three bedrooms follow a similar theme with tailored adjustments. These spaces were also designed to maximize natural light and create an inviting, open atmosphere. The neutral colour palette used in the living and dining areas extends into these rooms, ensuring cohesiveness across the home. The bathrooms have been designed to be exceptionally beautiful, embodying a luxurious, hotel-style experience. The team has used stone cladding throughout, extending from the floor all the way to the ceiling, creating a seamless and polished look. The outdoor spaces of the home have been designed with a seamless connection between the interior and nature, maintaining a clean and modern aesthetic. A prominent feature of the outdoor area is the serene seating zone next to a neutral-colored oriental-style waterfall.

The color palette of the home was carefully selected in collaboration with the clients to bring their vision of simplicity and serenity to life. While the primary palette is based on neutral tones, the use of earth elements like browns and greens was essential to bring warmth and grounding to the home, particularly in spaces dominated by white. Material choices such as the natural warmth of wooden floors and the luxurious texture of Calcutta marble in key areas further anchor the design.

Every aspect of the design of this home has been meticulously crafted to be compliant with VASTU principles. From the very beginning, the design took into consideration the importance of VASTU, ensuring that each corner of the house is perfectly aligned with its guidelines.

This home is rooted in serenity, simplicity, and connection to nature. It is a sanctuary that respects the client's preference for a clean, modern aesthetic while integrating elements that connect the interiors to the broader natural world — creating a sense of peace, unity, and timeless elegance.

Your Personal “Luxurious Home Lift”



JetElevator
Italian Home Lifts

Bungalows | Row House | Duplex Flat | Pent House | Showrooms | Resorts & Hotels

Attractive Looks, Requires Small Place, Single Phase 230V,
Auto & Manual Door, Pit 80mm, Head Room : 2300mm,
No Machine Room, Noiseless & Easy to install.

Head Office: 207- Gold Crest Business Park, L. B. S. Marg, Ghatkopar W., Mumbai 400 086, India.

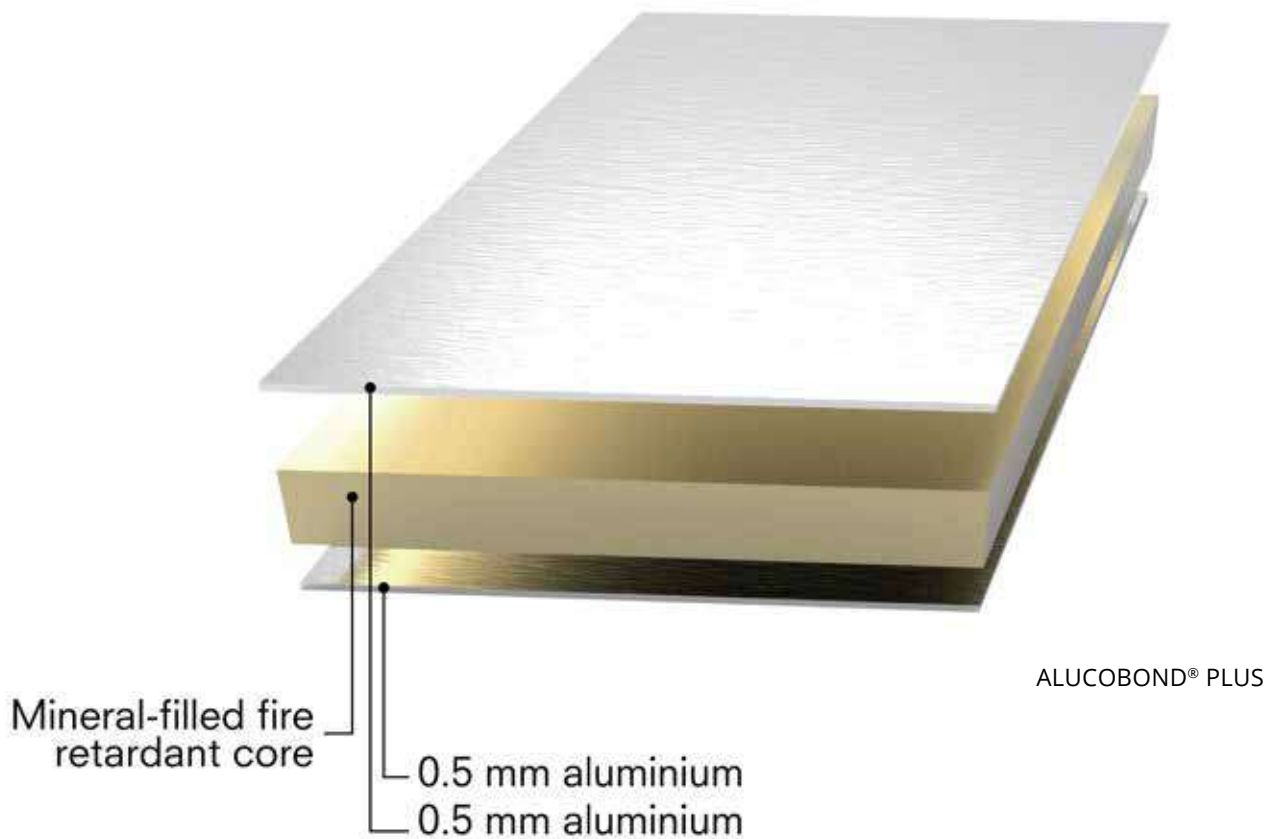
Tel.: 022 -25003444 / 441 **Mob. No.:** +91 82862 65555 **email:** sales@jetelevator.com

www.jetelevator.com



Beyond Functionality

Sabarmati Highspeed Rail Terminal, redefines the standards of safety, design, and sustainability with ALUCOBOND® PLUS.



The Sabarmati Highspeed Rail Terminal in Ahmedabad represents a significant milestone in India's transportation evolution, combining cutting-edge architecture with functional design to position it as a modern transportation hub. Designed by the architectural firm Design Workshop and led by the visionary leadership of the National High Speed Rail Corporation (NHSRC), the project required a material that could address safety, aesthetics, and sustainability while withstanding the challenges of an urban public environment.

The terminal, being a large-scale public infrastructure project, required materials that adhered to high safety standards, with fire-retardant properties essential for compliance with safety regulations. Additionally, the climate in Ahmedabad, known for its extreme heat, cold winters, and monsoon rains, demanded a robust facade that could endure these conditions. The design needed to reflect the modern, dynamic identity of the city while offering vibrant, fade-resistant colors. Furthermore, tight deadlines called for materials that could be efficiently fabricated and installed without compromising on quality.

To meet these challenges, the project team selected ALUCOBOND® PLUS, a globally trusted composite material renowned for its exceptional combination of safety, versatility, and aesthetic appeal. ALUCOBOND® PLUS features a fire-retardant mineral-filled core, meeting stringent international fire-safety standards, and ensuring the terminal's compliance with the highest safety protocols.



Sabarmati Highspeed Rail Terminal, Ahmedabad
Designed by: Design Workshop

The material also offered unparalleled resistance to weather and corrosion, with its PVDF/FEVE coating providing remarkable durability against UV rays and industrial pollution. This long-lasting performance helps the terminal retain its vibrancy and structural integrity, making it an enduring asset to the city's skyline.

The ease of installation was another key benefit of ALUCOBOND® PLUS, thanks to its lightweight structure and superior formability. This enabled B L Kashyap, the fabricator and installer, to meet tight project timelines while ensuring high-quality execution. In addition, ALUCOBOND® PLUS is a fully recyclable material, contributing to the terminal's sustainable design. Its application in a rear-ventilated system enhances energy efficiency by creating a protective envelope of Aluminium Composite Material (ACM) around the building. This envelope not only reduces long-term maintenance costs but also ensures the lasting durability of the structure.

The result is a striking, high-performance facade that not only meets safety and durability requirements but also makes a bold architectural statement. Completed in 2023, the Sabarmati Highspeed Rail Terminal stands as a beacon of modern design, sustainability, and functionality. The use of ALUCOBOND® PLUS helped achieve a terminal that provides safety without compromise, enduring performance, and a visual impact that has solidified its place as an iconic landmark in Ahmedabad.

This achievement was made possible through the collaboration of NHSRC, the visionary project owner; Design Workshop, the creative minds behind the design; B L Kashyap, the expert fabricator; and ALUCOBOND® PLUS, the trusted material partner. The Sabarmati Highspeed Rail Terminal is a true reflection of how innovative materials, when applied thoughtfully, can shape the future of urban infrastructure.

About 3A Composites

3A Composites is a global leader in the production of high-quality aluminium composite sheets (ACS) under the brand name ALUCOBOND®. The company, a part of Schweiter Technologies headquartered in Steinhausen, Switzerland, is an innovator in the field. 3A Composites, previously known as Alcan Composites, is an independent division of Schweiter Technologies and employs approximately 4,400 people worldwide. In line with the Indian government's 'MAKE IN INDIA' initiative, 3A Composites invested in India in 2007 to set up a state-of-the-art manufacturing facility near Pune, Maharashtra, which has the capacity to produce over 4 million square meters annually. The company is ISO 9001:2015 certified for quality management and ISO 14001:2015 certified for environmental management. With a corporate office in Mumbai and sales teams across India, 3A Composites continues to meet the needs of customers locally and globally.

Closer to the Context

ZAURA Boutique in Ahmedabad by R+R Architects, blends nature-inspired elements and minimalism in a luxurious retail space.

Located in the vibrant city of Ahmedabad, India, ZAURA Boutique is a testament to the innovative approach of R+R Architects. Spread across a sprawling area of 1600 ft², this jewellery boutique redefines the retail experience through its nature-inspired design. The boutique was completed in the year 2023, with the talented duo Ramesh Lohar and Bindi Shah leading the project. The architecture and interior design of ZAURA Boutique serves as a beacon of inspiration for those seeking to infuse natural elements into commercial spaces.

ZAURA Boutique's layout is meticulously planned to facilitate an effortless journey for its visitors. The space is divided into a welcoming lounge area and an elegant show area, connected through an open layout to foster a sense of spaciousness. This strategic division allows customers to navigate the boutique seamlessly, offering an immersive shopping experience. Explaining the design layout of the space, Ramesh Lohar, Founder & Partner, R+R Architects, says, "These rooms are connected in an open layout, creating a spacious experience. The interior architecture of the boutique takes inspiration from stone caves, adopting a minimalist approach. Sculpted, fluid walls and strategic lighting are used to create a space that feels uncluttered and organic. The walls are covered with a bespoke texture that resembles travertine stone. The display elements in the boutique are inspired by raw rock formations and are custom-made from metal, fiberglass, and glass." Bindi Shah, Partner & Interior Designer further adds, "To break up the textures, the lounge area features soft carpets, plush upholstery, and a mirror with rock details attached. Every aspect of the boutique, from the plinths to the furniture and décor, was designed and executed in-house."

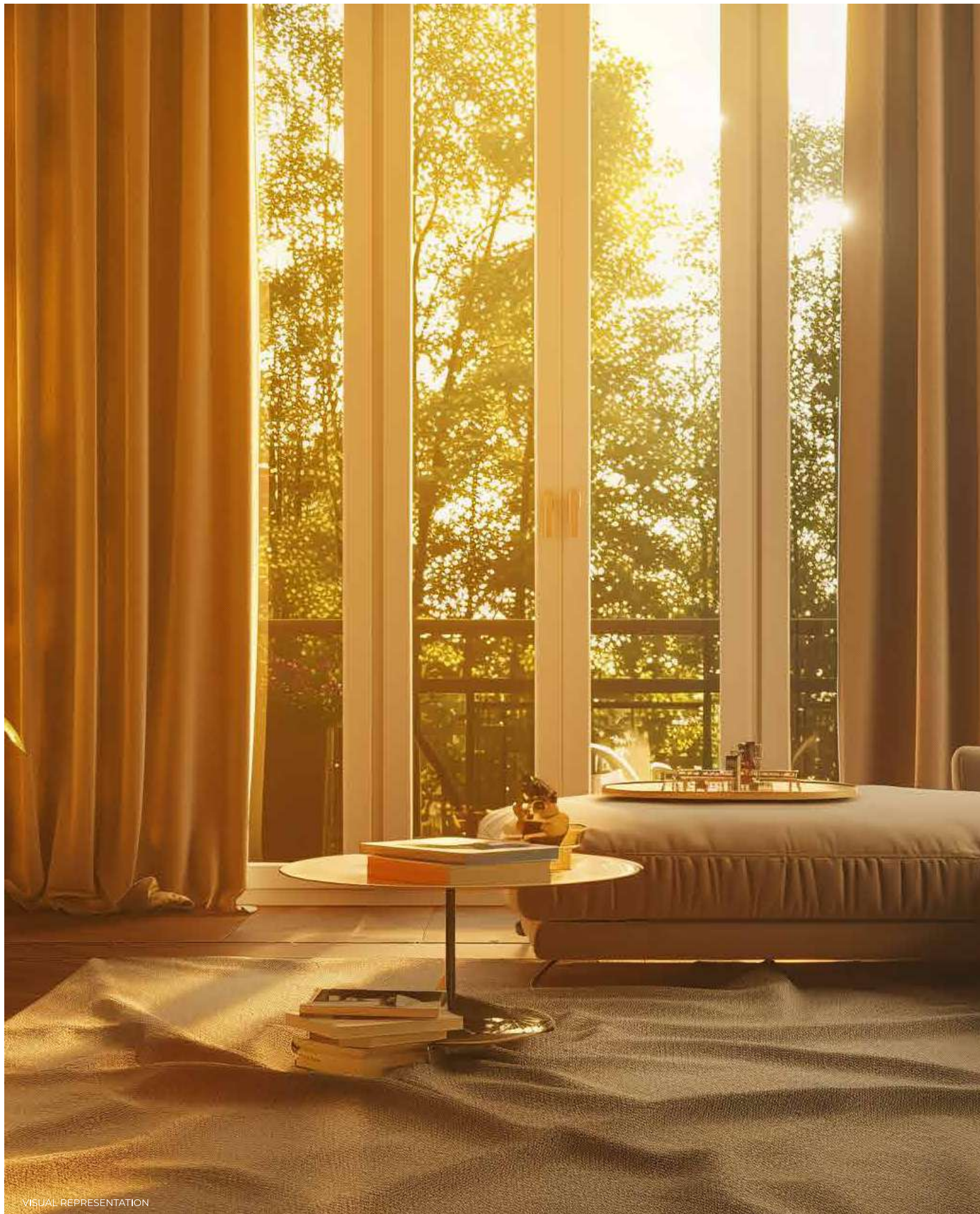




Custom-made display elements inspired by raw rock formations are crafted from metal, fiberglass, and glass, blending functionality with artistic expression. The lounge area contrasts these textures with soft carpets, plush upholstery, and a mirror detailed with rock elements, creating a harmonious balance between ruggedness and comfort. Even the bathroom in ZAURA Boutique adheres to the store's nature-inspired theme, featuring natural shapes and intricate stone work complemented by soft lighting. This careful attention to detail ensures that every corner of the boutique contributes to the overall organic atmosphere.

The goal was to design an interior that exceeds mere display purposes, instead, guiding customers on an immersive and ongoing experience. The project, serves as a source of inspiration, illustrating the profound impact of nature-inspired design in modern retail environments.

Photographs: The Fishy Project





DEFINED BY TRUST, *Celebrated By Promises Delivered*

At Ashar Group, our focus is on delivering promises of curated spaces across the choicest locations of MMR, specialising in residential, commercial & IT park, infrastructure, retail, education, healthcare, and hospitality. With the finest lifestyle options within and around our developments complemented by a vibrant mix of commercial and retail spaces, our consumers have consistently chosen our real estate offerings for nearly a quarter of a century.

— OUR MILESTONES —

FOOTPRINT

9 CR. Sq. Ft. Completed	17 CR. Sq. Ft. Under Development	30+ Projects	24 Years Of Legacy
-----------------------------------	--------------------------------------------	------------------------	------------------------------

LIVES IMPACTED

29,000+ Happy Residents	200+ Retail Brands	250+ Corporate Offices
5,000+ Students	710+ Beds Multispeciality Hospitals	

OUR LEGACY ACROSS MMR

Bandra, Vile Parle, Ghatkopar, Mulund, Thane, Kalwa,
Dombivli, Lonavala & Nashik

☎ 86555 18555 | 🌐 www.Ashar.in

One8 Commune: Virat Kohli's Sophisticated Foray into Hospitality

Virat Kohli's restaurant One8 Commune designed by SAAZ Design combines urban refinement with a lively Bohemian vibe, offering dynamic setting for diverse dining experiences.

Indian cricket captain Virat Kohli's venture into hospitality takes a polished and elevated turn with One8 Commune, offering a distinctive dining experience that mirrors his refined persona. The newest location, One8 Commune Noida, designed by Sanjana Singh of SAAZ Design, seamlessly blends urban sophistication with a vibrant Bohemian flair. Spanning 5,817 square feet with a seating capacity of 162, this dynamic space captures One8's signature style while exuding a grounded, cosmopolitan charm, making it a standout dining destination.

The design balances Bohemian spirit with urban refinement, creating an inviting yet stylish environment that resonates with Noida's evolving energy. Overcoming the limitations of a boxy, uninspired space, the design team crafted a sequence of interconnected zones to suit diverse dining experiences. From a quick drink at the bar to intimate dinners or open-air seating, each zone is thoughtfully designed to enhance flexibility and foster connection. A central column, initially a constraint, was reimagined as a focal point, enriching the flow and grounding the open layout.







“The layout is designed to maximize both space and comfort. Upon entering, guests are greeted by a lounge-style seating area with curved cushioned sofas and accent chairs. Along the walls, a row of high seating creates a dynamic level difference in the layout. On the opposite side, a raised area with deck flooring features C-shaped sofas, round tables, and Roman-style chairs, ideal for group seating. Toward the back, the bar area stands as a key focal point, featuring metallic-finished bar stools and quartet seating for casual gatherings.” Explains Sanjana Singh.

During the day, natural light floods the space through large glass doors, creating a bright, airy, and welcoming atmosphere. The use of light-colored walls, minimalistic furniture, and soft fabrics like linen enhances this freshness. In the evening, the mood shifts with the help of artificial lighting. Layered lighting systems, including recessed lights, pendant lamps, and sconces, help create a more intimate ambiance. Features like dimmers, colour-changing LED lights, and strategic accent lighting allow the space to transition from vibrant and functional to cozy and relaxing, perfect for evening dining or socializing.







The color palette—earthy hues accented with flamingo red and pink—adds warmth and vitality, while sustainable materials like recycled cotton, bamboo, and textured concrete introduce a natural, eco-conscious dimension. Rustic finishes enhance the Bohemian charm without compromising One8’s modern edge, creating a layered, harmonious atmosphere that feels both refined and relaxed. This blend of materials and tones imbues the space with warmth, sophistication, and approachability.

A prominent elevated bar and DJ area serve as the social heart, amplifying energy and encouraging social interaction. Living-room-inspired accents—floor lamps, potted plants, and console tables—lend a cosy, home-like warmth, inviting guests to linger in a space that feels like a stylish friend’s welcoming abode. The kitchen, discreetly tucked away, maintains the open layout’s visual flow and supports smooth service, while the seating plan ensures that all guests have a view of the performance stage, integrating entertainment seamlessly into the dining experience.

The design of this restaurant epitomises the brand’s philosophy and offers a harmonious balance between a lively social hub and a relaxing retreat, transforming the restaurant into a landmark destination. Blending local identity with a fresh, cosmopolitan allure, One8 Commune Noida redefines the dining experience, creating an ambiance that feels both enduring and effortlessly chic.

Project Details:

- Architectural Lights:** Philips
- Decorative Lights:** Salt and Grey
- Ceiling Covering:** Arte
- Glass Door:** Schuco
- Sanitaryware:** Kohler
- Hardware:** Hafele
- Fabric:** Warwick and Ddégor
- Ceiling Fans:** Fanzart
- Flooring:** Simpolo
- Flooring:** Mosaic Marble flooring
- Paint:** Sirca/oikos
- Bar Counter:** Onyx
- Switch/Socket:** Norisys
- HVAC:** Waves
- Exterior Cladding:** Greenlam
- Décor:** Salt and Grey, Oma
- Wall Textures:** Salt and Grey

Timeless Dining Landmark

IDEAS reimagines an 18th-century palace restaurant in Jaipur, now called Marble Arch, blending timeless heritage with contemporary elegance to create a world-class dining destination.

Originally built in 1745 as a garden pavilion for the Army Chief of the Maharaja of Jaipur, the Jai Mahal Palace represents a significant chapter in the city's architectural and cultural history. Defined by a combination of Rajputana and Indo-Saracenic architectural styles, the palace and its gardens are spread across 18 acres, establishing a serene oasis in the heart of the city.

Nestled within the palace is the Marble Arch restaurant. The all-day dining multi-cuisine restaurant has recently undergone a facelift by IDEAS, focusing on preserving its legacy while revitalising the furnishings, surfaces, and overall ambience. Named after its iconic Makrana marble arches, the hall has been meticulously restored to reflect the palace's Indo-Saracenic roots. Every detail has been carefully considered to honour the architectural style and history of the palace and its context.







One of the primary design challenges was preserving the historic marble arches that characterise the interiors. IDEAS approached this task with a deep regard for the restaurant's heritage, integrating old and new elements that enhance the space without compromising its historical integrity.

The project's planning phase focused on layout optimisation to improve circulation and functionality and accommodate large footfalls. The buffet area is redesigned to enhance service efficiency and guest comfort.

As guests enter the Marble Arch, they are greeted by a rich, textured colour palette inspired by Jaipur's signature pink and salmon hues. Sourced from Asian Paints' Dune series, this choice of colours evokes warmth and reflects the city's vibrant heritage. On the other hand, the feature walls are adorned with Asian Paints' Nilaya Series Chuna Pani wallpaper, featuring intricate Indian motifs that enhance the restaurant's cultural richness.





We believe that you
deserves to live and
work in spaces that
uplift and inspire!

b
black ink
interiors

www.blackinkinteriors.com



The furnishings have been updated with Satya Paul's Phool Mandi collection, showcasing exquisite embroidery of the native mogra flower. This addition not only brings a touch of luxury to the space but also pays homage to traditional Indian craftsmanship. Lighting plays a crucial role in the overall ambience of the Marble Arch. Custom-designed brass chandeliers, floor lamps, and wall sconces feature intricate designs that complement the space's elegance, casting a warm glow that highlights the architectural details and enhances the hospitality experience. Decorative mirrors with antique gold finishes serve as focal points throughout the restaurant, reflecting the beauty of the surrounding decor and amplifying the sense of space. These elements collectively contribute to the restaurant's regal charm and sophistication.

The ceiling features a heritage-inspired interlaced pattern, adding depth and character to the space. The intricate design details complement the arches and walls, creating a sense of grandeur and sophistication that resonates throughout the space.

The refurbishment of the Marble Arch reflects Jaipur's rich culture and history and provides a luxurious setting for culinary experiences that celebrate the artistry of diverse flavours. IDEAS' design interventions aim to ensure that the Marble Arch remains a timeless destination for future generations.

A Workspace That Inspires and Innovates

Essentia Environments' office in Gurugram epitomizes their design ethos, blending innovation, functionality, and timeless elegance to create a space that inspires creativity and collaboration.

Headed by the multi-talented duo Hardesh and Monica Chawla, Essentia Environments is a renowned design firm celebrated for crafting luxurious and timeless spaces. With a philosophy rooted in creating bespoke environments that blend elegance, functionality, and comfort, the firm has consistently delivered transformative designs that resonate with individuality and sophistication. From opulent residences to exquisite commercial spaces, Essentia Environments stands as a testament to innovation and refined craftsmanship.

Essentia Environments' corporate office in Gurugram reflects the organization's ethos and commitment to innovative design. This office serves as both a functional environment and a statement piece, it reflects their approach to innovation, materiality, and spatial storytelling. Every element—be it the layout, lighting, or choice of materials—speaks volumes about the architect's understanding of form, functionality, and aesthetics. In designing their own office, architects often push the boundaries of conventional ideas, creating spaces that inspire collaboration, stimulate creativity, and embody their unique design ethos.

In this office, clean lines and clutter-free spaces form the backbone of the design and space planning. Functionality takes precedence, especially in shared corporate environments. The aesthetic direction for this office reflects the mantra of "less is more," employing a carefully curated selection of materials. These materials are consistently utilised across all levels of the space, creating a cohesive and harmonious environment.





"If one were to encapsulate the design style of the Essentia office in a single word, it would be "calming." The space exudes a tranquil yet energizing atmosphere, fostering productivity while keeping stress at bay." Explains Monica Chawla.

"We were conscious that the office would not be a mere portfolio or an incoherent collection of spaces. Transparency and equal opportunities—values integral to the organization's operations—are physically embodied within the office. This vision ensures a seamless flow from one area to another, fostering unity and openness." says Hardesh Chawla.





Spanning an impressive 30,000 sq ft, the office accommodates 270 employees. High ceilings amplify the sense of space, while mezzanine areas overlook the general floor, adding depth and dimension. The layout includes 14 sitting meeting rooms, numerous standing meeting spaces, breakout lounges, material libraries, cafes, and restrooms. This thoughtful configuration supports the simultaneous hosting of up to 90 visitors, facilitating meetings, training sessions, and collaborative discussions with remarkable ease.

The office design prioritizes ergonomics, ensuring a dynamic work environment that encourages movement. Clear walking paths and team connectivity offers employees the chance to stretch and stay active. Each piece of furniture undergoes rigorous testing for shape, dimensions, and material quality to suit active, shared spaces. Ergonomics extend to aspects like temperature control and the use of non-allergenic, cleanable materials, ensuring comfort and health.

Visitors are greeted by a double-height, garden-facing foyer on the ground floor, offering a teaser of the design brilliance within. The workspaces on the second floor unveil an array of features: 14 meeting rooms, a large waiting area, multiple senior management cabins, glass-enclosed shared cabins, founders' cabins with outdoor decks, open-plan workstations for 250+ staff, and more. Additional amenities include staff cafés, archive rooms, material libraries, and breakout areas, each designed to enhance functionality and aesthetics.









Every element—from furniture to decor objects, wall claddings to metal accents—is designed and manufactured in-house. The building itself spans six levels, housing a 150,000 square-foot production space. The result is a workspace that is not only functional but also a true reflection of Essentia's design ethos: minimalistic, contemporary, earthy, yet vibrant.

Lighting design is a critical aspect, with a mix of imported magnetic tracks and decorative fixtures strategically placed to enhance the ambience. Lux levels are varied, creating a dynamic interplay of light and shadow that elevates the overall aesthetic.

The Essentia office is more than just a workplace; it's a collaborative and holistic space that fosters learning, sharing, and synergy. By housing all stakeholders of the design and build process under one roof, the office becomes a hub of creativity and innovation. This setup nurtures a spirit of collaboration and continuous improvement, embodying Essentia's vision of a connected and empathetic work culture.





REMODELING EXPECTATIONS

YOUR KITCHEN

WWW.HERITAGEKB.COM



Designed to accommodate a growing team, the office can easily double its capacity if needed. It caters to diverse needs, from collaborative teams to individuals requiring quiet and focus. This adaptability ensures that the space functions cohesively while meeting the unique requirements of various teams.

The Essentia office is a testament to the organization's ability to balance diverse demands. It seamlessly transitions between resembling a luxury resort lobby, a museum of priceless art, and a cozy college café. This creative challenge has been masterfully executed, making the office a true haven for its team.

The Essentia Environments office stands as a remarkable example of thoughtful design and innovation, offering a space that inspires, nurtures, and energizes its occupants while reflecting the organization's unwavering commitment to excellence.

A Fusion of Modern Luxury and Heritage

The Taj Hotel & Convention Centre, Agra, designed by architect Anil Badan, seamlessly combines modern luxury with Agra's rich cultural heritage.



Agra, also known as the “City of Taj”- is where history and design converge seamlessly. Renowned for the majestic Taj Mahal, this urban tapestry combines Indo-Islamic aesthetics with structural ingenuity. Beyond its iconic landmarks, the city thrives as a living canvas of evolving architecture, where traditional motifs inspire modern interpretations, allowing architects to fuse cultural heritage with innovative design. Located in the city, across from the iconic Taj Mahal is the ‘Taj Hotel & Convention Centre’, designed by Ar. Anil Badan, Principal Architect at Studio B Architects- an expression of grandeur, opulence, and elegance at its best. The hotel is a dreamland for guests and tourists with world-class amenities, luxurious rooms, and authentic cuisine options.

The hotel welcomes one with a lobby area, reminiscent of the royal elegance of the region. With marble flooring and an artfully crafted reception table, it reflects the opulence of the hotel. Brass accents and the iconic logo grab the spotlight in the space, while vibrant furnishings in red and yellow hues create a welcoming aura in the hotel. Moving further are the restaurants in the hotel- the Daawat-e-Nawab, lively buffets at Palato, the Tea Lounge, the Liquid Lounge, and the Infini-The Sky Lounge. “The restaurants are designed to offer regional cuisines with thoughtfully curated interiors, offering a feast for the palate and the eyes. It serves as a gateway to culinary traditions, complemented by interiors inspired by local art and architecture,” explains Anil Badan. The Daawat-e-Nawab features plush furnishings and textile accents reflecting the rich context of the city. Further, an accent wall mimicking the motifs of Mughal architecture like jaalis and pointed arches adds a unique character to the space.





The Palato restaurant, on the other hand, showcases a contemporary edge with neutral hues, warm lighting, and sleek furniture pieces. It integrates a grand buffet area with ample seating and cuisine options. The restaurant also extends outdoors with seating under pergolas and landscaped areas, offering a unique dining experience. Keeping in mind the essence of global presence, the Infini Sky Lounge presents an infinity pool with savouring cocktails, providing the essence of relaxation with a chic sense.

Presenting the guests with a memorable stay, the rooms are also designed with ultimate comfort in mind. With various categories like deluxe twin rooms, deluxe king rooms, luxury king rooms, and more, it offers guests maximum flexibility and options. Every room follows a modern aesthetic with comfortable beds and luxe amenities. The bathrooms incorporate premium bathtubs and vanities, elevating the idea of comfort. Considering the Taj Mahal as the vantage aspect, every room offers a scenic view of the iconic monument, connecting one with the history of the region.







Moreover, not-to-miss luxurious amenities in the hotel include wellness spas, high-end gymnasiums, a small museum, and game rooms, embracing the concept of rejuvenation with a memorable stay. The spa rooms are designed to include various therapies in a neutral and calm setting. Ample natural light floods into these spaces, creating a fresh and airy ambience.

Additionally, grand banquet halls with different capacities, offer a perfect setting for conferences and weddings. Opulent designs and grand chandeliers define the space, turning it into a mesmerising design couture. Moreover, the hotel also includes spaces for an iconic dream wedding, with elegant decor ideas and themes. Each location on the premises offers a panoramic view of the Taj Mahal, turning the wedding into a memory of a lifetime. Verdant 4.5 acres of landscaped gardens blend regal charm with contemporary style and state-of-the-art facilities, making this one of the best luxurious hotels in Agra.

Overall, the Taj Hotel & Convention Centre is a tribute to modern hospitality with cultural contexts and history. With premium stays and contemporary designs, the hotel makes every stay unforgettable!

Functionality at its best

Explore a selection of coffee tables that redefine functionality and style. These exceptional pieces are designed to be the heart of your space.

A coffee table is undoubtedly the hero of any living space. While it may not require the same attention as a sofa or couch, it plays a great role in tying up the overall space together. Coffee tables are one of those pieces of furniture that can really unify a space—but finding the best coffee tables is no easy feat. They come in every shape, size, material, and function you could think of, but it can still take time to find the one that's just right for your space and vibe.

Sharing his insights on the trends that one must look for while opting to invest in coffee tables Dr. Anurag Kanoria, Director, The Great Eastern Home says, "Organic shapes, including curves and asymmetry, are gaining popularity for their artistic appeal. Mixed-material designs, such as combinations of wood and glass, are favored for their ability to complement various interior styles. Tables with hidden storage solutions provide practicality while maintaining a clean and sophisticated look." Keerthi Tummala, Founder and Creative Director, Sage Living, further continues, "As people increasingly view their homes as a personal reflection of their identity, they seek pieces that have artistic value. The idea of "art for everyday living" is gaining traction, with sculptural furniture bridging the gap between the gallery and the home." Deeksha Jiwani & Sushant Madan, Co-Founders and Principal Architects, Designery, say that patterns like monochrome stripes or textured surfaces enhance the aesthetic appeal, turning the table into a centrepiece.



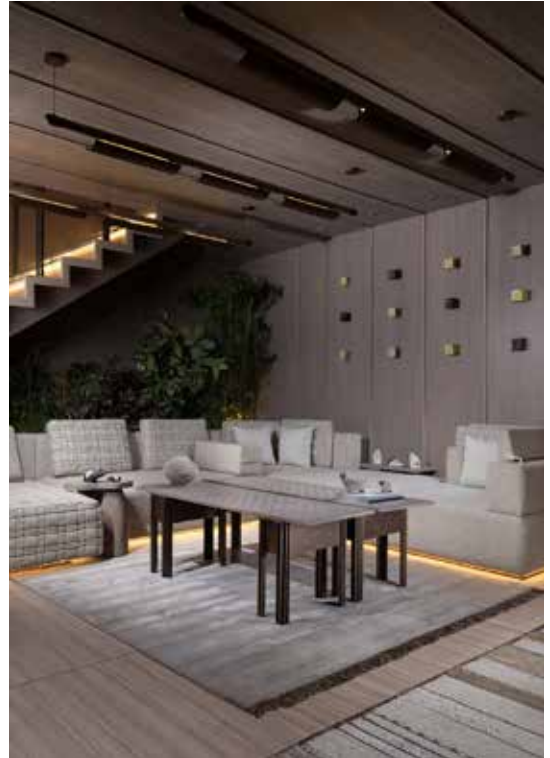
Opt for designs that harmonize with the space while adding a layer of sophistication." Sarita Handa- Founder and Chairperson, Sarita Handa, says, "Current trends in coffee tables emphasise natural materials, organic shapes and artisanal craftsmanship, blending style with sustainability. Materials like wood, glass, and natural stones such as travertine, marine black stone, are highly sought after for their ability to add texture and sophistication." Sachin Gupta and Neha Gupta, Founders and Interior Designers, Beyond Designs, say that semi-precious stones like lapis lazuli can be used for pops of colour and regal sophistication. Mother of Pearl offers a beautiful contrast when used as inlay on black marble.



Throwing light on their range of coffee tables, Puneet Budhiraja, Founder and CEO, Quba Homes, says, "Our coffee table collection blends timeless elegance with modern artistry. A standout is the Wrap Coffee Table, which features a unique radiating pattern and elegantly tapered legs. Its smooth silhouette and precise detailing make it adaptable for both classic and contemporary interiors. The table's USP is its combination of artistic design and practicality, seamlessly enhancing any refined living space." Saba Kapoor, Co-founder, Nivasa, says, "Our collection features an array of coffee tables, like Pebble-on-the-Beach Coffee Table, Marble Inlay coffee tables, Seagull Coffee Table and Miniature Garden Coffee Table, each with unique designs tailored to suit diverse aesthetics and needs." Amruth Sampige, Co-founder, Dash Square, further adds, "A few of our standout ranges are the "Minimalist Collection, and traditional collection" known for its clean lines, intricate details, high-quality materials, and unique designs."



The coffee table is primarily used as a surface for placing beverages, books, remote controls and other small items. However, its utility is beyond the size. It can often be used as a dining space for casual meals, a workspace for laptops, a writing zone and a display area for various decorative items. For those with limited space in their home, coffee tables with storage options work wonders. Many modern designs have hidden compartments and lots of discreet places to store items and reduce the clutter all around the house. This functionality makes the coffee table versatile and adaptable to various needs and spaces. Offering tips on ways by which a good and trendy coffee table can help accentuate your living area, Rupika Harshwardhan, Founder of JODOH, says, "What we've discovered through our designs at JODOH is that interesting shapes and unconventional forms can transform a simple coffee table into a conversation starter.



When a coffee table successfully balances aesthetic appeal with functionality, it naturally becomes the focal point of your living room, creating a harmonious flow in the space. We encourage our clients to think of their coffee table as an art piece that they interact with daily.” Lalitesh Mandrekar, General Manager- Design, Interio, informs, “Modern designs, like the sleek Jaxon, Milee and Transpose ranges from Godrej Interio, effortlessly complement various interior styles, enhancing the overall aesthetic appeal. Beyond its visual charm, these coffee tables offer multifunctional aspect, doubling as a dining or work surface, which is especially valuable in compact spaces.” Roheena Nagpal, Co-Founder & Principal Designer – Rwardé, adds, “Coffee tables create a visual anchor for the seating arrangement, harmonizing form and function. The layering potential it offers—be it through artful decor, books, or natural textures—adds depth and personality to the space.”

A coffee table has significant weight—both literally and figuratively. It’s a central hub for daily life, a place to gather, relax, and provide convenience. Coffee table materials play a pivotal role in shaping its character and how it interacts with your space. Whether it’s a timeless wooden option, the sleek aesthetic of metal, the transparency of glass, or the unexpected texture of upcycled materials, each speaks volumes about your aesthetic preferences. Elaborating on the right kind of materials and colour scheme, Gautam Vora, Director, Akruti Luxe, says, “At Rimadesio coffee tables, available at Akruti Luxe, glass is a preferred choice for its low porosity and ease of maintenance, ensuring longevity and effortless cleaning.





For those seeking richness and texture, marble and wood tops provide timeless elegance. As for colour palettes, neutral tones like nero opaco (matte black), bianco neve (snow white), and crystal grey create a sophisticated look, while options like verde oliva (olive green) or amaranto lucido (glossy amaranth) add a unique touch of personality. Dr. Mahesh M, CEO, Creaticity further adds, "Opt for materials like natural wood, metal, marble, or tempered glass for durability and style. Neutral tones like beige, white, or grey enhance versatility, while accents of gold, black, or earthy greens add character." "If you're going for a mid-century modern vibe, Chase Coffee Table from our Classic Couture collection- a chic table with marble top and wooden drawers can complement the aesthetic. If your space embraces a bohemian or eclectic style, Tusker Coffee Table from our Boho Bliss collection brings a touch of the wild with its tusk-like base, making it perfect for adding a statement of strength and elegance to contemporary living spaces", says, Natasha Jain, Co-Founder, Natelier by Bent Chair.

The perfect coffee table will complement your decor while standing out on its own; it will also need to hit that Goldilocks sweet spot—not too big, not too small—with the scale of not only the furniture you surround it with but the size of the entire room. We've taken the guesswork out by selecting the most stylish coffee tables out there, at a variety of budgets, styles, and sizes. So no matter your aesthetic preference, we've got a piece that will speak to you—whether you're drawn to a Scandinavian, glam, or ultramodern look. Add one to your shopping cart now. Thank us later.

Eco-Sensitive Design

The Kumaon, a boutique eco-tourism resort in Almora, Uttarakhand, designed by Zowa Architects offers unparalleled views of the Himalayas

The Kumaon by Zowa Architects is a vernacular and highly contextual hospitality design project, situated on a sloping, terraced site with breathtaking views of the alpine Himalayan landscape. This boutique eco-tourism resort in Almora, Uttarakhand is situated at 1600 metres above sea level in the village of Kasar Devi, near the charming town of Almora. The hotel is named after the region it is situated in, one of breath-taking beauty filled with abundant mountains, valleys, forests, and scenic lakes.

Based out of Colombo, Sri Lanka, Zowa Architects is led by architects Pradeep Kodikara and Jineshi Samaraweera. Sharing the story behind where the resort got its name from, Pradeep says, "The Kumaon is named after its location. It seemed that travellers were familiar with various sub-regions in the Indian Himalaya, from Ladakh to Kangra to Kullu and Garhwal, but the name "Kumaon" didn't evoke the same familiarity. While people were acquainted with locations such as Nainital, Corbett National Park, Bhimtal and the like, all of which are in the Kumaon division of Uttarakhand, the overarching name of the region was less recognised. So we decided to simply name the property after the region – The Kumaon – in a bid to highlight the particular characteristics of this region, distinct from other parts of the Himalaya, in terms of food, culture, art, music, architecture and fauna alike."





Spread across a 12000 sq. ft., there were two themes that were pivotal in the decision making, firstly the need to highlight local material and secondly how buildings sit in the landscape. "We found that a chalet type concept of scattered spaces was complimentary to the site. Overall, our attempt was to highlight the stunning natural landscape and focus on the mountain views. The inspiration was all around us, the simple village houses, the landscape, the culture and above all the magnificent Nanda Devi mountains. Hence although we didn't think of a 'theme' the local material palette made that decision for us", informs Jineshi.

As far as the architectural brief is concerned, the programme included 10 rooms with ensuite, main entrance lounge and outdoor lounge, dining room, small bar, powder room, library, spa, yoga space and services. The services included kitchen, kitchen yard and service area, adequate storage, a manager's office, accommodation and washroom, staff accommodation and toilets, generator room, raised water storage to take advantage of gravity pressure allowed by the topography of the site, and rainwater harvesting and recycling tanks. Jineshi further adds, "The core design concept was to cause minimum impact and blend into the landscape rather than stand out and to take maximum advantage of the spectacular views. To this extent it also made sense to take advantage of local materials, the expertise and skill of the local labour force available as well as sensible technology to create a building that is understated yet confident in its simplicity."



The approach to hotel is through a small gate off the foot path, and a defined walkway which arches towards the main lounge. A row of planted bamboo is used to cover the view of the chalets beyond, and obscure the mountain views, heightening the sense of expectation and the sense of “arrival”, on entering the site. The main building is situated on the highest point in the site, the ground level is the main entry point which houses a lounge, a library, powder room and administrative facilities; while the first floor houses a dramatic steel cantilevered dining room with floor-to-ceiling glass that offers unmitigated views of the Himalaya with a direct axis vista centred on ‘Nanda Devi’. “Standing inside this space looking through the seamless glass gives a sense of being suspended above the valley, closer to the mountains. Further, the roof of the lounge becomes a terrace for outdoor dining and yoga”, informs Pradeep.

Rooms are dispersed in pairs, staggered, one atop the other, scattered across the site at different elevations connected by foot paths. The main service building is situated on the flat single acre plot across from the public footpath situated before you enter the two-acre section of the site with the hotel proper. Located at the lowest elevations of the site taking advantage of the surface runoffs as well as the cleaner water from roofs are collection and purification tanks for rainwater harvesting and storage. The buildings including the main building housing the public areas are all designed with a stone base and a light upper structure clad in bamboo reminiscent of the traditional architecture of the region which have a base of stone masonry walls and carved woodwork on the upper floors. Jineshi updates that, the exposed dress stone walls built by the expert village masons are reminiscent of the old neat retaining walls lining the roads in the village, highlighting the beautiful multicoloured stones of the area. The thick stone walls work well with heating and cooling just as in traditional buildings. On especially cold nights in the winter the stone crafted traditional wood fireplace in the main lounge keeps the guests cosy and warm.





The upper structure in the main building which cantilevers out is designed as an efficient steel box truss similar to that used in bridges, anchored to, and extending out perpendicular to the stone structure below, which in turn sits on the highest terrace of the site. The cantilever is supported by two pillars which rise a height of twenty-five feet from the slope below. The steel structure is painted black and is clad on three sides with bamboo to reduce its visual impact, and to frame the view of Nanda Devi from within. The roof of the stone base becomes a spill over space or a communal patangan (traditional Kumaoni courtyard) as seen in local row houses, ideal to serve a sunny breakfast, do yoga or simply read.

The chalets follow the same architectural language, with the lower room built as a base in dressed stone walls and the upper chalet staggered back, built in fly-ash brick, clad in bamboo. "The staggering of the floors serves several purposes. It breaks up the structure in a way that reduces the visual bulk but also sits, following the slope more economically with less disturbance to the original profile of the contours. The staggering also allows for each of the upper chalets to have a private patangan or terrace while the lower chalet enjoys a version adjacent to the structure, often under a wild pear tree. It also increases the sense of privacy for the occupants, where each chalet can be entered off a different contour via a staircase of 4 to 5 steps placed on the opposite sides of the chalet, reminiscent of the entrance stairs in old houses", adds, Pradeep.

Local pinewood is used extensively, from floor finish to doors and windows and internal partitions and panels. The bed, table and seat are designed as an island unit facing the view and is finished in smooth cement render. The toilet walls are finished in kadappah a black stone cut into tiles, while the terraces and balconies were paved with kota, a popular and cheap Indian granite which has a texture and feel of smooth cement.



While the views dictated the need to have the main openings directed towards the north-east, the large window seats (besides providing ample lounging space) are surrounded by planes of glass, placed facing south and south-east to allow for passive solar heat gain, while thickness of the stone walls, double layering of the fly ash wall with bamboo cladding, pine wood partitions within the room designed as a functional double layered separation, as well as the pine wood floors aid in retaining and maintaining the heat within the room. The service buildings and the service quarters are built as a separate structure in one-acre plot of the site separated from the rest of the site by the public foot path and the strip of common land.

The interior is simply and honestly finished to compliment the structure. All the furniture was custom designed and made on site by local carpenters. Authentic and colourful rugs collected for years by the clients during their travels splashes exuberant colour in the otherwise rather polite finishes and although not all of them are local, they are strangely evocative of the 'Aipan' art of the region. The traditional local tamta artisans were engaged and convinced by the clients to produce contemporary designs of exquisite, handcrafted copper accessories and decorations for the project. Fabric for the window blinds, furniture upholstery and all woollen fabric for bedding was locally sourced in the old mills of Almora, which as mentioned before has a fine tradition of weaving establishing during colonial times.

TRAILBLAZE PAINTS

Quality painting that goes deeper than the surface

Experience the care and quality of Trailblaze Paints! We aim to build trust by making our clients and team members feel like part of the family. From our first conversation to the last small detail, we're here for you.

www.trailblazepaintsnc.com



ABID Interiors 2025: A Grand Showcase of Innovation and Design



ABID Interiors 2025, East India's largest and most prestigious interior design and architecture exhibition, held between January 10–13, 2025 in Kolkata set the stage for groundbreaking innovation and creativity. Held with grandeur over four days, the event highlighted global trends and advancements, reaffirming ABID's commitment to excellence in design. The inauguration ceremony was graced by prominent personalities, including actress Neelam Kothari, internet star Bhawna Pandey, celebrated fashion designer Seema Kiran Sajdeh, and Maheep Kapoor, a well-known internet personality. Their presence added a touch of glamour, captivating audiences and elevating the event's stature. The success of the exhibition was driven by the ABID leadership team, under the stewardship of President Kamlesh Agarwal, with invaluable contributions from Vice President Raja Sinha, Treasurer Mukul Bothra, Joint Secretary Surjit Dua, and Exhibition Coordinators Anjan Gupta, Samiran Banik, and Abhijit Saha. Their meticulous planning and collaborative efforts ensured a flawless execution, setting a new benchmark for design expos in the region. President Kamlesh Agarwal shared, "ABID Interiors 2025 was not just an exhibition; it was a platform for sharing ideas and global perspectives. Our goal is to inspire collaboration, encourage knowledge exchange, and support the growth of the design industry in Eastern India and beyond." Vice President Raja Sinha added, "This expo reaffirmed our dedication to advancing design. It served as a platform for professionals to connect, exchange ideas, and shape the future of design and architecture." Surjit Dua, Joint Secretary, emphasized the role of technology, stating, "ABID Interiors 2025 highlighted how innovations like AI and advanced materials are transforming interiors into smarter, more sustainable spaces." Exhibition Coordinators Anjan Gupta, Samiran Banik, and Abhijit Saha echoed the sentiment, celebrating the event as a milestone for fostering creativity, collaboration, and innovation in the design community. Designer Enclave: A Creative Spotlight A key highlight was the Designer Enclave, a curated space showcasing the work of 21 exceptional designers. Vandana Buddhia, Founder of Vermillion and Executive Member of ABID, remarked, "For over three decades, this exhibition has been a pillar of creativity and collaboration. The Designer Enclave captivated attendees with its unique and inspiring creations."



Among the designers featured were Shreenidhi Saharia (EclectIQ by Shreenidhi Saharia), Vidhisha Nimuchwala and Yusuf Hussain (designONE), Smriti Kejriwal and Prakriti Choudhary (PS Interiors), Sunanda Goenka (Inscale Designs), and Karishma Mehta (Karishma Mehta Designs). Industry Support and Sponsorship The event's principal sponsor, Woodwiser, a leader in high-quality wall panels, doors, frames, shutters, and wardrobes, expressed immense satisfaction with the turnout and business opportunities generated. With its innovative showcase and strategic networking opportunities, ABID Interiors 2025 marked a significant milestone for the design and architecture industry, setting a high standard for future exhibitions in Eastern India.

Lifestyle

Dreamy Drawers

Elevate your bedroom with the Antigo Chest of Drawers Mirror + Sideboard Mirror Legnano. This sophisticated set features a beige finish complemented by stunning bronze glass details, adding a touch of elegance and warmth to your space. The dresser and mirror are designed to blend seamlessly with modern or classic interiors, offering both style and practicality. Perfect for organizing and enhancing the aesthetic of your bedroom, this piece combines functionality with timeless design.

creaticityonline.com



Vision Meets Design

Rvvardé, introduces the Visionary Series, an extraordinary collection of bespoke desks crafted to redefine the modern workspace. Anchoring the series is The Cornerstone, a desk that epitomizes enduring beauty and versatility. Seamlessly combining classic design elements with a modern edge, The Cornerstone is perfect for multi-purpose spaces, embodying sophistication and adaptability. Each desk in the Visionary Series is a masterclass in design innovation. The Creative Vision caters to forward-thinkers, featuring asymmetrical elements and multi-functional surfaces that encourage creative problem-solving. For those who value gravitas in their workspace, The Executive Anchor offers a commanding presence with its robust form, clean horizontal lines, and spacious layout, making it an ideal centerpiece for executive offices. For minimalists who seek bold elegance, The Modern Icon showcases a streamlined silhouette paired with textured finishes that evoke contemporary luxury. Meanwhile, The Statement Maker is designed for trailblazers, combining sharp geometry and exotic veneers to create a striking piece that elevates any boardroom or executive office. Crafted with meticulous attention to detail, each piece embodies sophistication, purpose, and excellence, transforming workspaces into sanctuaries of productivity and inspiration.

rvarde.com



Glorious Tiles

Antica Ceramica, a has recently launched a new marble-look tile collection that combines the elegance of natural marble with the durability and ease of maintenance of porcelain tiles. Antica Ceramica's marble-look tiles offer the same refined aesthetic as natural marble, but with the added benefits of durability and low maintenance. These tiles are designed using advanced production techniques that replicate the intricate veining and textures of real marble, making them almost indistinguishable from the original material. One of the key advantages of marble-look tiles is their resistance to common issues associated with natural marble. These tiles are highly resistant to spills, stains, scratches, and moisture, making them perfect for high-traffic areas such as kitchens, bathrooms, hallways, and commercial spaces. Available in a range of colors, sizes, and finishes, the tiles are suitable for various design styles, from classic to contemporary, and can be used in a variety of spaces.

www.anticaceramica.in



A Symphony of Form and Function

Innovative Design Studio, renowned for merging contemporary artistry with unparalleled craftsmanship, proudly introduces the Bell Suspension Lamp by Axolight. Designed by manuel e vanessa Vivian to evoke warmth and a sense of familiarity, its fluid contours create a soothing interplay of light and shadow, making it a perfect centerpiece for residential, commercial, or hospitality spaces. The Bell collection, offered in pendant and ceiling versions, features a durable painted aluminum frame and an energy-efficient LED light source. Its customizable colors and finishes ensure seamless integration into diverse interiors. Enhanced by flame-retardant pongé fabric, the lamp also functions as an acoustic solution, reducing noise by up to 59% with an Equivalent Sound Absorbing Area of 4.63, making it a perfect blend of style, functionality, and sensory comfort.

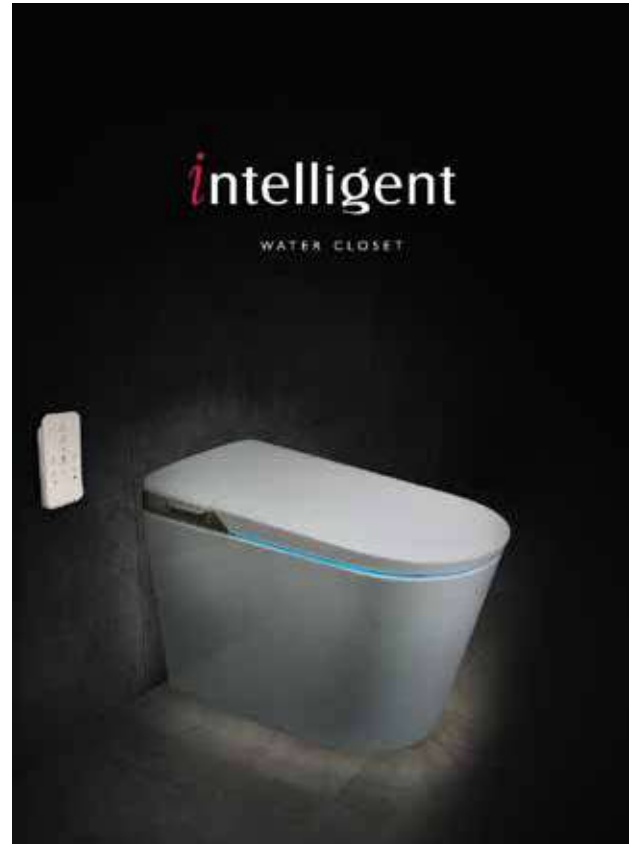
innovativedesignstudio.in



Redefining Bathroom Luxury

Plumber Bathware is proud to introduce the Intelligent Water Closet, one of the outstanding innovations that would redefine the bathroom luxury. Designed to mix sophistication with the advanced technology, this intelligent WC offers a perfect blend of comfort, convenience, and modern design, setting new standards for your luxury living. The Intelligent Water Closet is engineered to provide a seamless, hygienic, and comfortable experience. Some of its key features include: Automatic Seat Opening and Closing for an entirely hands-free experience, Self-Cleaning Technology to ensure spotless cleanliness and hygiene after every use, Antibacterial Coating that helps keep harmful germs at bay, providing a safe environment for you and your family, Seat Warmers and Nightlight that add comfort and luxury, perfect to use at any hour of the day and Integrated Drying Device for a touch-free, refined finish, adding a layer of elegance to your daily routine. Every feature has been thoughtfully designed to combine high-tech functionality with sophisticated style, delivering an unparalleled bathroom experience. In addition to its advanced technology, the Intelligent Water Closet is certified for water efficiency, making it an ideal choice for environmentally conscious homeowners. It offers a perfect balance between cutting-edge performance and sustainability. Priced at ₹2,24,290, the Intelligent Water Closet is more than just a product—it's an investment in a luxurious lifestyle. With its smart features and premium craftsmanship, this innovative solution offers unmatched comfort, hygiene, and convenience, making it the ultimate choice for discerning homeowners. Experience the future of bathroom luxury with the Intelligent Water Closet by Plumber Bathware—where technology, comfort, and elegance meet.

plumberbathware.com



Setting a new benchmark in indoor air purification.

Ugaoo, India's #1 houseplants and urban gardening company, has joined forces with uBreathe, a trailblazing biotechnology startup, to revolutionize the air purifier market. The two companies have co-developed a ground-breaking, plant-based air purifier called UBreathe Life that enables individuals and corporations to reduce air pollution inside their homes and offices. uBreathe Life's air purifier seamlessly blends nature with advanced technology, setting a new benchmark in sustainable indoor air quality solutions. Engineered for spaces up to 250 sq.ft., it features a patented Breathing Roots Technology, which enhances natural plant-based filtration through a five-layer system for superior purification. Its IoT-enabled companion app offers real-time monitoring of AQI, temperature, and humidity, ensuring customers stay informed about the quality of their indoor environments. Crafted from eco-friendly, recyclable materials, the purifier is not only energy-efficient but also aligned with modern sustainability goals. Fully compatible with smart home systems, it provides seamless remote control for added convenience. Combining functionality with aesthetics, the uBreathe Life purifier elevates air quality while complementing any interior decor with its sleek, contemporary design.

ugaoo.com

Digitally Advanced

Designed to seamlessly integrate onto your main door, Hafele's new RE-Ach Digital Lock is a formidable amalgamation of security and style that ensures utmost safety along with premium aesthetics. Besides its captivating appearance, this advanced digital lock offers multiple access options – the convenience of fingerprint recognition, the simplicity of RFID cards, the familiarity of passwords, and the versatility of the Hafele Smart Living App – a mobile application that can help operate and manage your lock remotely, giving you complete control of the access to your home. This lock now also features the Privacy Locking Mode which further enhances convenience and functionality. So, in essence, you are the key! Encased in Rich Antique Copper and Black Matt finishes, RE-Ach digital lock provides exceptional functionality and elevated aesthetics.

hafeleindia.com



Thoughtful Creations

Kathgodown, renowned for its luxury craftsmanship infuses your living space with their thoughtful metal creation. Crafted entirely from metal, these statement pieces combine timeless design with purposeful utility, redefining modern décor. The Circle of Life sculpture acts as a significant artistic expression. Completely made of metal, it represents the voyage of human existence and the experiences gathered throughout. This mesmerizing artwork is ideal for individuals who value purposeful design, enhancing any environment with its profound symbolism and impressive shape. The Conical Jars serve as versatile storage options that elevate the aesthetics of your home. Ideal for coffee tables or consoles, these jars boast matte black and gold designs, effortlessly blending elegance with functionality. Their streamlined, minimalist design brings a contemporary flair to any area, serving as both a practical and aesthetic improvement. Elevate your wine collection with a chic addition using the Wave Rock Wineholder. Featuring a striking wavy design and complemented by a sculptural rock detail, this lightweight and low-maintenance product is available in black, green, and beige. Ideal for entertaining or showcasing on your bar cart, it effortlessly combines practicality with visual appeal.

kathgodown.com

Blue Love

Sobé Decor is proud to unveil Azul, a groundbreaking collection that marks a new chapter in luxury home decor. Crafted from rare blue clay porcelain, Azul is the first of its kind in India, blending artistry, tranquility, and sophistication into everyday living. The name Azul, derived from the Renaissance celebration of blue for its calming and harmonious qualities, inspires this collection's serene aesthetic. Featuring a unique vintage white glaze layered over a rustic matte blue clay finish, Azul pieces exude understated elegance while capturing the essence of oceanic tranquility. The Azul collection by Sobé Decor features an exquisite range of handcrafted blue porcelain tableware, each piece reflecting timeless elegance and sophistication. Highlights include the Azul White & Blue Mug (MRP: ₹1,660), the Azul White & Blue Espresso Cup & Saucer Set (MRP: ₹2,770), the Azul White & Blue Coupe Dinner Plate (MRP: ₹2,350), the Azul White & Blue Asian Bowl (MRP: ₹3,885), the Azul White & Blue Soup Bowl (MRP: ₹1,410), and the Azul White & Blue Coupe Salad Plate (MRP: ₹1,635). Each item combines artistic craftsmanship with a tranquil design, perfect for elevating your dining experience.

sobedecor.com



Miscellaneous

Luxurious Destination

Luxurify, the premier designer hand-knotted carpet brand from the house of RKS Carpets, is set to transform the Indian luxury landscape. Backed by RKS Carpets' 35-year legacy in global luxury, Luxurify blends timeless craftsmanship with modern elegance to create exquisite rugs for discerning homes. At the heart of Luxurify is a commitment to heritage and sustainability. Partnering with over 10,000 skilled artisans, the brand preserves the centuries-old art of hand-knotting while empowering rural communities. Each rug is a masterpiece, reflecting the dedication of artisans and the richness of traditional craftsmanship.

The brand's launch showcases three distinct collections curated by iconic Indian supermodels, each embodying a unique style: Carol Gracias brings contemporary vibrancy with bold geometric patterns, abstract motifs, and lively color palettes, perfect for modern, dynamic spaces. Rickee Chatterjee reflects modern luxury with minimalist designs, clean lines, neutral tones, and subtle textures that evoke calm and sophistication. Deepthi Gujral celebrates timeless tradition with intricate Persian, Turkish, and Roman-inspired patterns in opulent hues, appealing to lovers of classic elegance. With a focus on ethical practices, quality, and innovation, Luxurify is more than a brand—it's a movement to preserve heritage and redefine luxury living.

luxurifyhome.com





COLLIERS HILL

Design & Build Your Perfect

Custom Home | Home Addition | Major Remodel

www.livecolliershill.com

Prioritizing Sustainability

Rêve Rattan, has launched its first flagship studio in Chennai. Located on Govindappa Naicken Street, this new destination promises to redefine home décor by offering a blend of tradition, craftsmanship, and sustainable luxury. The newly inaugurated 900 sq. ft. studio stands as a testament to Rêve Rattan's dedication to authenticity and craftsmanship. Every piece on display has undergone rigorous quality testing, including load-bearing, stress, and comfort tests, ensuring it meets the highest standards. Customers visiting the Chennai studio can experience iconic designs firsthand, including signature pieces like the Haven Lounge Chair, Mosaic Chair, Zenith Dining Chair, and Halo Bar Stool. Rêve Rattan takes pride in its design philosophy, where tradition and innovation coexist seamlessly. By blending heritage techniques like wicker weaving with modern design trends, the brand creates furniture that is as functional as it is beautiful.



reverattan.com

Smart Innovation

Towering furniture has long been an effective response to managing storage in homes with limited space. However, the practical challenge of accessing high spaces has remained a persistent issue. Blum's SPACE STEP emerges as a double-duty solution tailored to improve accessibility and storage. Conceived with urban living in mind, SPACE STEP by Blum addresses the difficulty of accessing higher cabinets. This innovative plinth solution integrates into the toe kick of base units, transforming unused space into a highly functional cabinet. Simply stepping on the SPACE STEP gives users the height advantage to access the upper reaches of tall furniture. But SPACE STEP offers more than just easier access. It also maximises storage potential by converting under-utilised toe kick areas into valuable hidden storage. This feature is particularly beneficial in kitchen environments where every inch counts or in bathrooms that need additional storage space, making SPACE STEP an essential addition.



blum.com

Futuristic Offering

Valcucine has always stood out for its focus on human well-being through the pursuit of solutions that enhance daily interaction with the kitchen, creating new user experiences through distinctive Special Elements. Among the most innovative and recognizable Special Elements designed by Gabriele Centazzo, the equipped back panel New Logica is characterized by upper tilting doors and downward sliding doors that open and close smoothly to reveal its full functionality. At the Milan Design Week 2024, Valcucine presented the redesign of this Special Element. New Logica has been rethought, identifying three distinct areas - cooking, washing, and preparation - and re-equipped thanks to the introduction of new wooden elements designed by Gabriele Centazzo and new internal accessories in walnut, enriching the functionality of the work areas. Among others, Dish rack and glass drainer accessory optimized in size to hold four place settings to increase available space, Storage trays with sponge drainer function and containers + preparation kit composed of two cutting boards, knife holder, and rolling pin, Integrated hydroponic cultivation: a system that allows the cultivation of vegetables in water (concept) and Modular system with electrified track that allows portable management of electric current. Recognizing that architectural integration has become essential in high-end kitchen projects, the Special Element of New Logica is further enriched by the possibility of vertical development.

valcucine.com/en/atelier-valcucine/valcucine-mumbai-akruti
akrutiluxe.com



A Tribute to Natural Geological Beauty

Renowned for its legacy and unparalleled craftsmanship, Stone Art, a brand with roots dating back 150 years, has launched its latest collection, "Cave's Whisper." These sculptures, crafted from natural rocks, evoke the essence of stalagmites, breathtaking mineral formations found in caves, created over thousands or even millions of years by the gradual accumulation of mineral deposits from dripping water. Their rugged, upward-reaching structures and intricate organic textures mirror the timeless beauty of these natural wonders. Aptly named "Cave's Whisper," the collection celebrates the raw artistry of nature, offering a piece of the earth's ancient narrative to adorn your living spaces. It is a statement piece for modern interiors. These sculptures can be styled in minimalistic or rustic settings to create a serene ambiance. Place them on natural wood pedestals in living rooms or patios to emphasize their organic charm, or pair them with lush greenery for a harmonious, earthy vibe. They also complement industrial-style homes with exposed brick walls and metal accents, offering a rugged yet refined touch. Ideal for entryways, lounges, or garden corners, these sculptures effortlessly enhance the character of any home.

www.stoneart.asia





SEAATS

ADAPTABLE FURNITURE SOLUTIONS



WE LOOK FIRST AT CLIENT OBJECTIVES AND THEN TAILOR FURNITURE SELECTIONS TO MEET DESIGN, STYLE, PRICING, AND TIMELINE SPECIFICATIONS. WE WORK WITH CLIENTS IN A VARIETY OF INDUSTRIES AND WITH VARYING DESIGN GOALS AND SPACE PLANNING CONSIDERATIONS.

SELECTING THE RIGHT OFFICE FURNITURE REQUIRES JUST THE RIGHT BALANCE OF DESIGN, SPACE PLANNING AND PROJECT MANAGEMENT EXPERTISE.

WWW.SEAATS.COM

Statement Cabinets

Essentia Home redefines luxury living with bespoke furniture and decor pieces that combine timeless craftsmanship with modern innovation. Known for crafting furniture for modern interiors, Essentia Home unveils an extraordinary cabinet that exemplifies bold design and artistic sophistication. This cabinet, finished in a luxurious burgundy hue, is a striking embodiment of contemporary design. Its curved silhouette and rich texture bring depth and character to any space. Merging modern aesthetics with classical inspiration, the piece is complemented by a backdrop of intricate architectural sketches. Beyond its visual appeal, the cabinet offers ample storage, seamlessly blending beauty with functionality. This unique cabinet transforms spaces, bringing character and sophistication. Paired with the thoughtfully curated ambiance, it elevates the essence of modern living. Positioned as a versatile piece, it serves as a conversation starter in living rooms, a statement in dining areas, or a luxurious addition to home offices.

info@essentiaenvironments.com



Minimalist Masterpiece

Opulin is a premier destination for luxury home decor and furnishings, curating exceptional pieces from the world's most renowned brands. With a commitment to artistry and design excellence, Opulin brings 101 Copenhagen's Exquisite Vases to transform spaces into curated sanctuaries of style and refinement. Each vase from the collection is a masterpiece of craftsmanship, blending clean lines with sculptural shapes. The carefully curated materials exude quality and sophistication, whether placed as a standalone centerpiece or paired with fresh florals, these vases make a bold statement of understated luxury. Ideal for adding texture and depth to your interiors, 101 Copenhagen's vases enhance the aesthetic appeal of any setting, from sleek modern homes to eclectic spaces. Their sculptural appeal ensures they transcend functionality, serving as artful additions to shelves, consoles, or dining tables.

www.opulin.com



Classic Vanity

Küche7, the pioneers of luxury stainless steel kitchens, wardrobes, and vanity units in India unveils its latest masterpiece, the 'Blossom' Vanity, a celebration of refined craftsmanship and timeless design. This beautiful vanity combines natural elements and modern aesthetics to create a calm and refined area, imbued with sophistication and serenity. The primary feature of the Blossom Vanity is its intricate marble countertop, highlighting the beauty and durability of natural materials. The natural patterns in the marble give a sense of cohesion and steadiness, blending well with the contemporary features of the design. The vanity becomes more intricate and dimensional when set on a curved metal base featuring a subtle gold coating. This detailed pattern adds a touch of subtle elegance and captures attention, becoming the center of attention in any room. The mirrors on the arches enhance the timeless elegance of the vanity. The smooth curves highlight the elegance of traditional design, while their placement generates a sense of airiness and roominess in the area. Also contributing to the charm are wall-mounted lights that give off a warm light, creating a serene and inviting atmosphere. The Blossom Vanity blends classic and modern design aspects in a practical arrangement, displaying enduring elegance. Perfect for individuals looking to overhaul their living spaces, this vanity showcases Küche7's dedication to providing carefully crafted solutions that enhance daily living.

kuche7.com



Graceful Elegance

Sans Souci, a leading designer and producer of glass and lighting installations, proudly introduces the Soul collection, a captivating blend of artistry and innovation. This luxurious lighting series reimagines contemporary design, creating environments that exude elegance and serenity.

Drawing inspiration from the natural harmony of light and form, the Soul collection reflects Sans Souci's mastery of craftsmanship. Each piece is meticulously handcrafted, combining intricate textures and vibrant hues to create an ambiance of sophistication. The collection's fluid silhouettes and luminous designs ensure it seamlessly adapts to diverse interiors, transforming spaces into sophisticated havens of light.

Crafted with the finest materials, the Soul collection showcases Sans Souci's commitment to artistry and innovation. Designed to evoke emotion, its luminaires serve as both functional lighting and statement pieces, making them ideal for private residences, luxury hotels, and commercial spaces.

Available in a variety of customizable designs and finishes, the Soul collection allows homeowners and designers to create bespoke lighting installations that resonate with their unique vision. From intimate living areas to grand lobbies, these luminaires enhance every space with an effortless blend of luxury and refinement.

+919818995920



Furnishings

Unique Wallpapers

Dialogues by Nirmals exclusively showcases in India wallpapers from the renowned Spanish brand Coordonné. They have launched a new wallpaper collection – Arcane – from Coordonné that brings the beauty and serenity of unique landscapes. The Barcelona-based company, Coordonné is world renowned for its high-quality wall coverings and fabric collections. A pictorial representation of an experimental garden located in the Oyarzun Valley, Guipúzcoa, Arcane exudes charm and harmony. The garden was created as a place to carry out research into nature and to recreate unique landscapes, and Arcane poetically interprets the exterior landscape. Spectacular plant scenes arranged in the form of terraces create a sublime visual impact. The challenge was to transform the valley environment by creating a plant-testing laboratory. Arcane emulates the natural setting, and permeates the walls like a pleasant breeze. The collection offers an array of nature-inspired colours to suit a wide range of environments.

nirmals.com



Soft and Swoon-Worthy

Infuse your space with love through the Poole Collection by RR Decor. This collection elevates your living space with a serene and sophisticated charm, highlighting luxurious textures and a flawlessly chic blend of blush, nude, and gentle grey tones. Crafted with attention to detail, the Poole Collection is perfect for creating a tranquil retreat that is elegant and inviting. Whether you're beautifying snug armchairs or dressing windows with gentle pastel drapes, these textiles add a touch of timeless elegance to every corner of your home. But Poole isn't just about aesthetics, it's about the experience. The velvety softness of each fabric offers a sensory escape, helping you relax and unwind after a busy day. This collection, showcasing an ideal combination of quality, style, and comfort, transforms spaces into a peaceful retreat where luxury is personalized.

rrdecor.com

Refined Layers of Comfort

Sarita Handa is known for bringing luxury to homes with its beautiful designs and fine craftsmanship. The brand combines traditional embroidery techniques with modern styles, creating timeless pieces that stand out. With a focus on detail and sustainability, Sarita Handa has become a go-to name for elegant and high-quality home décor. The Eternal Charm Quilted Bedspread is a gorgeous addition to any bedroom. Its soft, natural cotton base is decorated with earthy tones like sage green, ochre, and ivory, inspired by latticework and natural vines. Made with 100% solid cotton and cotton batting, it is not only durable but also soft and comfortable. This bedspread adds warmth and charm to your bedroom, blending classic design with modern elegance. Perfect for creating a cozy and inviting space, it's a versatile piece that brings both beauty and comfort to your home.

saritahanda.com





GRAND PRIX
Home Elevators & Pools



Lifting up your spirits and your standards!

Graand Prix offers high-end, luxury elevator solutions and relaxing, aesthetic swimming pools crafted to give you a blissful experience.



Customized products



Premium quality



Cutting edge technology

Contact Now

+91-808 080 8785

Graand Prix, 407, Flying Colors, Pt. Deendayal Upadhyay Marg, Mulund (W), Mumbai - 400080.

www.graandprix.com

IVAS
SLABS | QUARTZ

When you love your home, it loves you back.

At IVAS, we believe that your home is alive & has a heart that beats for you. It needs your love & care. Come, experience the joy of transforming houses into loving homes!

— Ghar Dhadakne Do —



Powered by
INFRA.MARKET

 www.ivas.homes |  **99000 80007**

Tiles | Quartz | Bath Fittings | Modular Kitchens | Electricals | Designer Hardware

hansgrohe

Life is waterful.



XELU Q



XEVOLOS E



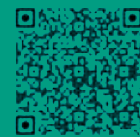
XUNIVA S



ELUPURA Q

hansgrohe Ceramics:
Always matching
your personal style
and needs.

+91 91750 23246
marketing@hansgrohe.in



ExcellentFit



Ceramics
Production